

NET PRESS RUN AVERAGE DAILY CIRCULATION for the Month of May, 1929 5,330

Manchester Evening Herald

THE WEATHER Forecast by U. S. Weather Bureau, New Haven Showers tonight and Thursday.

VOL. XLIII, NO. 203.

(Classified Advertising on Page 10)

SOUTH MANCHESTER, CONN., WEDNESDAY, JUNE 12, 1929.

TWENTY-SIX PAGES

PRICE THREE CENTS

HARTFORD SOCIETY AGOG OVER SCANDAL

Bench Warrants Issued for Edward W. Broder, Prominent Lawyer and Suffield Society Woman Found in Hotel Room—Both Now Under Care of Physicians

Hartford, June 12.—Hartford society gasped today. Hugh M. Alcorn, of Suffield, state's attorney, issued bench warrants for Edward W. Broder, prominent Hartford attorney, and Mrs. Lillian Spencer Hastings, member of a leading Suffield family, charging them with a statutory offense.

WEDDING RUMOR OFFICIALLY DENIED London, June 12.—The Central News issued the following inspired statement today denying rumors that Princess Ingrid, of Sweden, may become engaged to a member of the British royal family.

WALES MAY WED IN NEAR FUTURE

London Buzzes With Rumors That Prince Will Marry Princess Ingrid of Sweden

London, June 12.—While London continued to buzz today with reports that the engagement of the Prince of Wales to Princess Ingrid of Sweden may be announced shortly, no definite confirmation of the rumor could be obtained from authoritative sources.

GRAND JURY SCANS HARTFORD MURDER

Youth Is Accused of Killing Storekeeper While Attempting to Rob Store.

Hartford, June 12.—A true bill charging murder in the first degree was returned by a Superior Court Grand Jury after a hearing on the case of Frank Di Battista, of Hartford, because of the shooting of Samuel Kamoroff, late in March.

Judge Christopher L. Avery immediately dismissed the jury after plans were made to plead to the indictment during the afternoon.

Hartford, June 12.—Benedict M. Holden today headed a Superior Court Grand Jury raised by Judge Christopher L. Avery here, and with seventeen other jurors started at once to consider the case of Frank Di Battista, a local youth, charged with slaying Samuel Kamoroff, a local grocer, late in March.

Similar Case The case paralleled the shooting at Bridgeport, on March 23, of Lester Jacobs, a chain grocery manager, for which a Bridgeport youth is now under sentence of death.

SWEDISH FLYERS FAIL FOR THE FOURTH TIME

Make Another False Start and Return on Trip from Iceland to Greenland. Reykjavik, Iceland, June 12.—Captain Albin Ahrenberg, Swedish aviator and his two companions, made another false start today in their attempted trans-Atlantic flight from Stockholm to New York.

DRY KILLING UNWARRANTED, SAYS ROBERTS

Special Treasury Agent Deplores Slaying of Innocent Autoist in Minnesota; Detroit Victim Dying.

International Falls, Minn., June 12.—A bitter, grief-bowed mother widowed by a prohibitionary customs border guard's shotgun slugs, and her two little fatherless girls today took their dead to Eveleth, Minn. There the funeral of Henry Virkula, 41, Big Falls confectioner, will be held tomorrow.

Slayer in Jail Emmett White, novice government guardsman, who shot Virkula to death with a riot gun as the confectioneer was driving his wife and daughters home, today remained in sanctuary of the county jail. Strong feeling in this section is believed to have induced him to prefer the jail to liberty on a \$1,500 bond fixed with a coroner's jury ordered him charged with second degree manslaughter.

Blame the System "It is a feeling against the whole system," he said. The law-abiding citizens have been subjected to innumerable indignities by the enforcement officers. Every man resents the thought that he can't go along the highways he builds without being subject to assassination.

Was a Novice White, a recruit in the customs service since May 1, had not yet (Continued on Page 3.)

PRESIDENT FACES ANOTHER REBUFF

National Origins Act Up for Vote Which May Be Taken Tomorrow Afternoon.

Washington, June 12.—President Hoover was faced with the possibility of a new rebuff today as advocates of the National Origins clause of the 1924 Immigration Act pressed for a vote on a motion to discharge the Senate immigration committee from consideration of a motion to repeal the clause.

Confident of a rejection of the motion, sponsored by Senator Nye (R) of North Dakota, supporters of the Origins provision, giving preference to English and Scandinavian stock in immigration quota, were ready for the Senate to express itself. President Hoover has declared in favor of repeal of the clause, which will go into effect July 1 unless Congress acts.

Census Bill Sponsors of the new census-reapportionment bill, meanwhile planned to attempt to secure a (Continued on Page 3.)

"Torch Slayer" Goes to Trial



The death penalty was sought for Henry Colin Campbell, 61-year-old civil engineer, when he went on trial in Elizabeth, N. J., accused of the "torch murder" of Mrs. Mildred Mowry, his bigamous wife.

TORCH SLAYER IS HAZY AS TO MURDER DETAILS

Can't Remember Anything "KING" SOCKO LEAVES TOWN FOR GOOD—GOOD!

Elizabeth, N. J., June 12.—Henry Colin Campbell, imitation Don Juan, testified today at his trial for the torch murder of Mrs. Mildred Mowry, his bigamous wife, that his legal wife, Mrs. Rosalie McCready Campbell had threatened to kill herself and their three children after his finances collapsed two years ago.

PRESIDENT FACES ANOTHER REBUFF

National Origins Act Up for Vote Which May Be Taken Tomorrow Afternoon.

Washington, June 12.—President Hoover was faced with the possibility of a new rebuff today as advocates of the National Origins clause of the 1924 Immigration Act pressed for a vote on a motion to discharge the Senate immigration committee from consideration of a motion to repeal the clause.

Confident of a rejection of the motion, sponsored by Senator Nye (R) of North Dakota, supporters of the Origins provision, giving preference to English and Scandinavian stock in immigration quota, were ready for the Senate to express itself. President Hoover has declared in favor of repeal of the clause, which will go into effect July 1 unless Congress acts.

Census Bill Sponsors of the new census-reapportionment bill, meanwhile planned to attempt to secure a (Continued on Page 3.)

FARM BILL REJECTED; HALTS RELIEF PLANS

Airplane To Deliver Mail To Liner Today

Newark, N. J., June 12.—An airplane and a series of minor incidents, tempt to deliver late mail to the Levathan and to pick up late shore mail from the ship as it steams off sea near Ambrose Lightship will be made this evening.

PROTESTANT CHURCHES PLANNING TO COMBINE

Obstacles to Unification Discussed at Meeting of Institute of Religion; Reasons for the Merger.

Buck Hill Falls, Pa., June 12.—Out of the Institute of Religion, which concludes its sessions tomorrow at Buck Hill Falls Inn, there is expected to come a movement the definite aim of which will be for unification of all Protestant churches in America.

COMMUNITY DAYS TO PROMOTE TOWN

Merchants Offer Unusual Values to Attract Local and Outside Patronage.

A town of broad, well paved highways, leading from the North and South, the East and West; a town laid out in such a way as to preserve instead of enact, the beauties of Nature; a town where the parking problem is unknown; and above all a town whose merchants are always courteous, always smiling, determined to give satisfaction with every purchase.

'NEW HAVEN' PLANS NO MORE MERGERS

Merely Petitions to Buy Blocks of Stock Offered Them for Sale.

New Haven, June 12.—The New York, New Haven & Hartford railroad today disclosed plans for a further union of lines in which it now holds a partial stock control.

NEW RUM RACKET

New York, June 12.—The latest rum rackets was revealed here today when ten defendants in a prostitution case admitted they had redistilled a chemical ure spray in order to obtain its alcoholic content.

President's Program Faces Troubled Future After Bill Without Bounty is Defeated in Senate—House to Vote on Debenture Tomorrow.

Washington, June 12.—President Hoover's farm relief program today as a result of the Senate's rejection of the farm bill conference report because the export debenture plan had been abandoned.

COMMUNITY DAYS TO PROMOTE TOWN

Merchants Offer Unusual Values to Attract Local and Outside Patronage.

'NEW HAVEN' PLANS NO MORE MERGERS

Merely Petitions to Buy Blocks of Stock Offered Them for Sale.

NEW RUM RACKET

New York, June 12.—The latest rum rackets was revealed here today when ten defendants in a prostitution case admitted they had redistilled a chemical ure spray in order to obtain its alcoholic content.

THE CLASSIFIED SECTION BUY AND SELL HERE

Want Ad Information Manchester Evening Herald Classified Advertisements...

LOST AND FOUND ANNOUNCEMENTS PERSONALS AUTOMOBILES FOR SALE...

BUSINESS SERVICES OFFERED FLORISTS-NURSERIES MOVING-TRUCKING-STORAGE...

Answers for the Question Box WHO wants to hire a bright, young man... WHERE can I find a good cook... WHEN is the next sale...

APARTMENTS-FLATS-TENEMENTS 63 FOR RENT-FOUR ROOM flat on Cottage street... FOR RENT-AT 164 Eldridge street...

REAL ESTATE FOR EXCHANGE 76 FOR SALE OR EXCHANGE ON Mother street just finishing 6 room modern house with garage...

Rockville Final Bowling Match The big games in the Bowling League contest of the Rockville Fire Department will come to a successful close this week...

INDEX OF CLASSIFICATIONS Births, Engagements, Marriages, Deaths, In Memoriam, Lost and Found...

FOR SALE-FORD COUPE in good running condition, painted and good tires, \$65. Phone 2344 or 1422-12.

MOVING-TRUCKING-STORAGE S. F. WRIGHT, moving and trucking, Freight carting. Telephone 2942-3.

HELP WANTED-FEMALE 35 BOOKKEEPER wanted. Call at Dunhill's Store. WANTED-16 YEAR old girls to learn mill operations.

SUBURBAN FOR RENT 66 FOR RENT-3 acres of land, suitable for tobacco or corn. S. J. Wetherill, Deming street. Telephone 335-2.

HOUSEHOLD GOODS 51 FOR SHORE COTTAGES 6 piece parlor set, mahogany and leather \$15. One 3 piece mission oak set \$15.

G CLEF CLUB TO HOLD BANQUET IN HARTFORD The season's final rehearsal of the G Clef Club was held last night in the Swedish Lutheran church, adjournment being made following a motion to resume rehearsal on Tuesday, September 10.

FOR SALE-ESSEX FOUR touring, good condition. \$75. Call after 6 p. m. Tel. 960.

FOR SALE-CADILLAC 7 passenger touring car in good condition. Walter Olcott, 357.

PAINTING-REPAIRING 21 W. E. HURLOCK Painting, Paperhanging and Decorating. Residence: 16 Lincoln St. Tel. 39-W.

HELP WANTED-MALE 36 WANTED-16 YEAR old boys to learn mill operations. Apply to Cheney Brothers Employment Office.

ROOMS WITHOUT BOARD 59 FOR RENT-NICE large cool, unfurnished room. Inquire Dr. T. H. Weldon, Weldon Block, Main St.

HOUSES FOR SALE 72 FOR SALE OR RENT 12 room house, all improvements in garage. Inquire of owner, 33 Stone street.

FOR SALE FILLING STATION ON STATE ROAD Reasonable Price. Full Particulars from ROBERT J. SMITH 1009 Main Street Phone 750-2.

GAS BUGGIES-A Matter of Figures



By FRANK BECK



By FRANK BECK



A Home Of Your Own

\$500 down gives you a warrant deed to a new six room colonial, oak floors, steam heat, sun parlor. A complete house and garage for \$9500.

FLAPPER FANNY SAYS:



It's usually a bunch of nerves that's all wrapped up in worry.

SENSE and NONSENSE

Grounded
Two may live on love, but love won't live on two bucks a day; Marriages may be made above, But they break in an earthly way.
A traveling man one night found himself obliged to remain in a small town on account of a washout on the railroad caused by the heavy rain, which was still coming down in torrents. The traveling man turned to the waitress with: "This certainly looks like the food."

LETTER GOLF

START TO WISH. You can get MUCH in letter golf if you first WISH for it and then take four strokes. That's par and the solution is on another page.

W I S H
M U C H

THE RULES

1-The idea of Letter Golf is to change one word to another and do it in par, a given number of strokes. Thus to change COW to HEN, in three strokes, COW, HOW, HEW, HEN.
2-You change only one letter at a time.
3-You must have a complete word, of common usage, for each jump. Slang words and abbreviations don't count.
4-The order of letters cannot be changed.

Some people wonder why they don't get on when they are merely trying to get by.

Business usually goes where it is collected and stays where it is well treated.

A doctor won't take medicine. He says that the medical books teach that it is to give, not take.

Friend-"Tell me your secret of success. How have you obtained so many customers in such a short time?"
Grocer-"Well, I got a parrot and I trained it to cry out, 'Oh, isn't she pretty!' every time a lady entered the store."

"They say if there is anything in a man, travel will bring it out."
"You tell 'em I found that out my first day at sea."

Dora, at bridge party: "Dick is all right if you know how to take him."
Della: "I hate these people who have to be labeled like a bottle of medicine."

The Young Wife: "How do you like the steak, dear?"
Her Husband: "Fine, but where's the gravy?"
"I wondered how soon you'd miss it, you absent-minded boy. You didn't bring a drop with the meat."

To be hurried means soon to be worried.

A pessimist is the sort of a man who blows out the lights and then says "See how dark it is."

Of course everybody knows that the Double O is the heaviest winner on a roulette wheel. Also we all know that it pays to play for big stakes. Both facts have been brought to mind by a Pacific coast gambler who submits this: R-OOO-sevilit; W-OO-drow; C-OO-lidge; HOO-ver.

She-Do you know I have the soul of an artist?
He-I knew you painted the minute I looked at your face.

Almost any time now we may expect to see the restaurants retaliate by putting in a line of drugs and toilet articles.

It is not true that all the world loves a lover. Only a small portion of it can hardly stand him.

From our observation some people still use the penny quite extensively.

This world can never be kept clean by people who neglect themselves to scrub their neighbors.

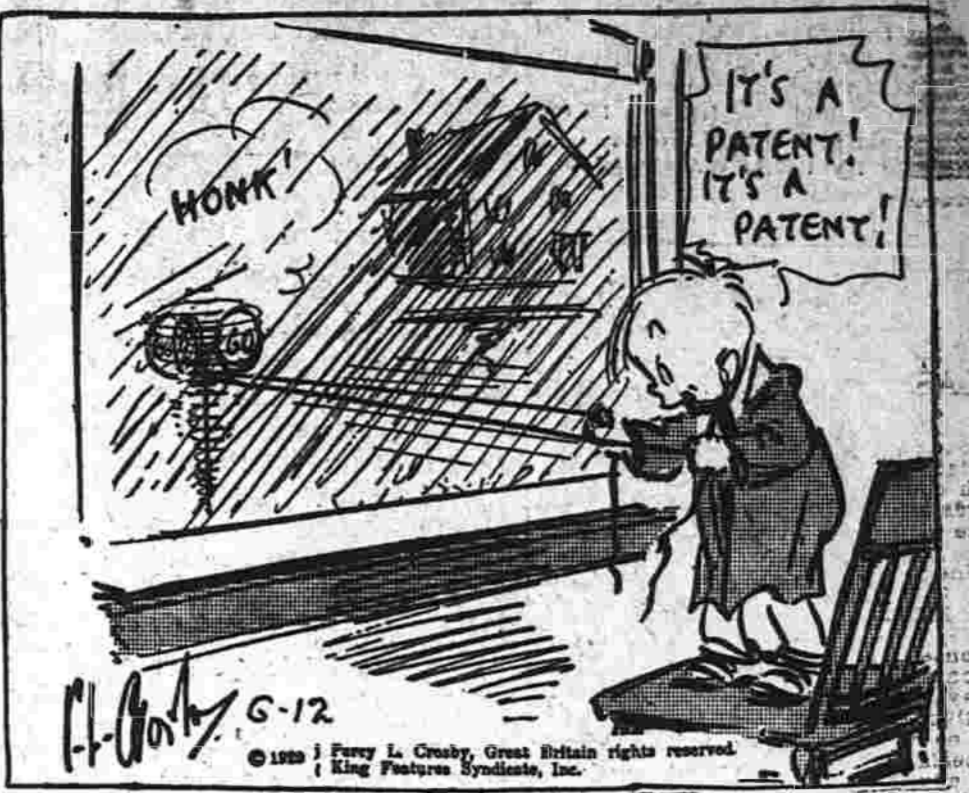
SKIPPY



Mickey (Himself) McGuire



By Fontaine Fox

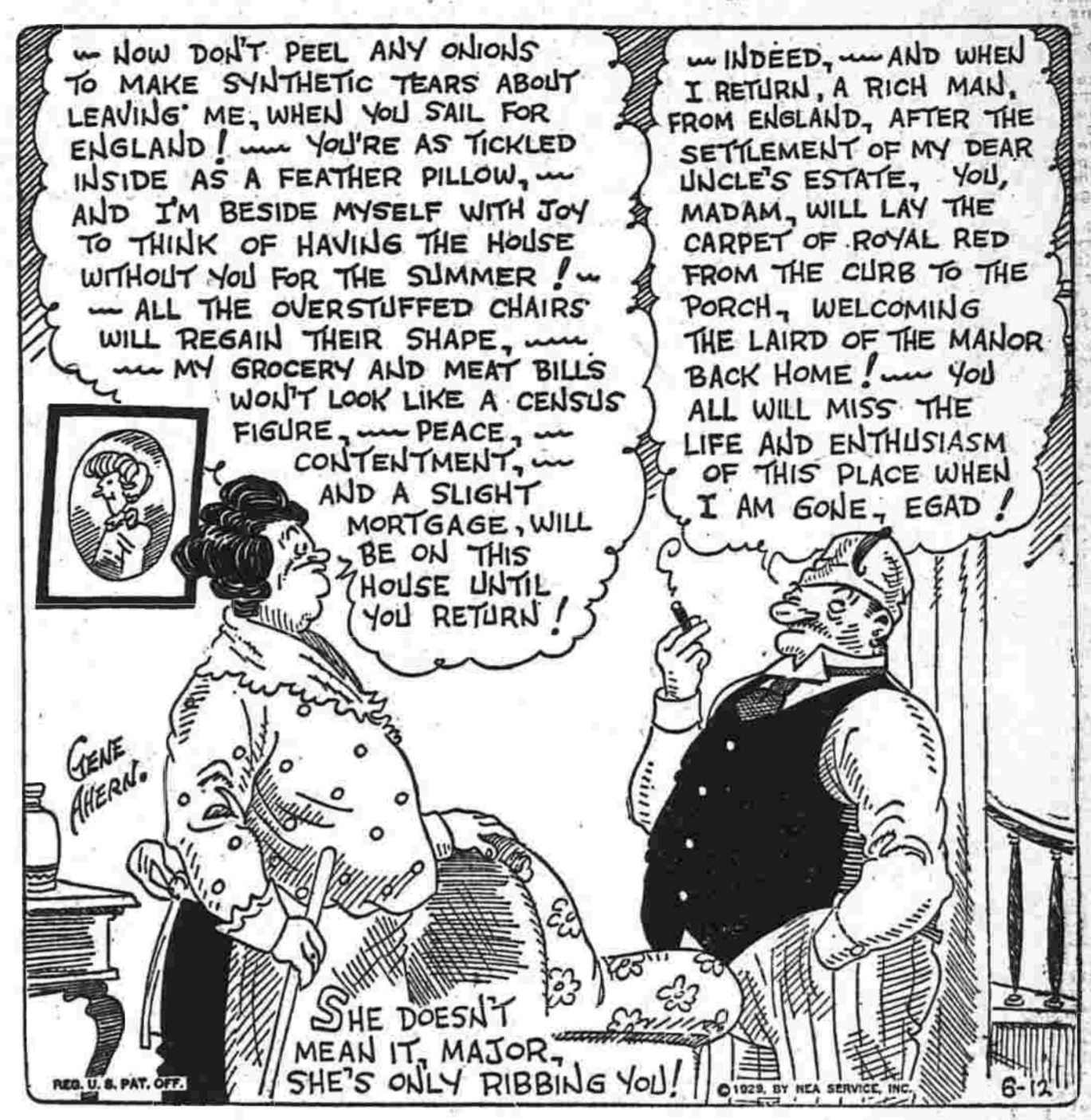


OUR BOARDING HOUSE By Gene Ahern

McGUIRE'S MARVELOUS MARKSMANSHIP EVENS UP SOME OLD SCORES WITH THE COP.



By Fontaine Fox, 1929



By Gene Ahern, 1929

WASHINGTON TUBBS II



The Day After



By Crane

THE TINYMITES



READ THE STORY, THEN COLOR THE PICTURE

The scarecrow watched kind Scouty sew, and then he said, "You seem to know just how to do this little task. You're clever as can be. I'm certain, when you're finally through, that I will feel as good as new. There's never been a scarecrow quite as fortunate as me."
"Oh, this is not so hard to do," said Scouty. "And you've helped me, too, by sitting still. I merely push the needle in and out. If I keep on, and naught goes wrong, and this fine thread proves good and strong, you'll soon be patched together, and can walk again, no doubt."
"I'm very glad to say that I have found that if you really try, you can do almost anything. It's easy to succeed. The ones who fail are those who don't do what they can because they won't. Ambition, I've discovered, is the one big thing you need."
Then Clowny said, "His arm is loose, and it will be of no good use unless you sew it tight again. And, gee, look at his head. I fear if Mister Scarecrow'd cough 't would jar his head and shake it off. You'd better sew that, too. Here is another spool of thread."

FRECKLES AND HIS FRIENDS



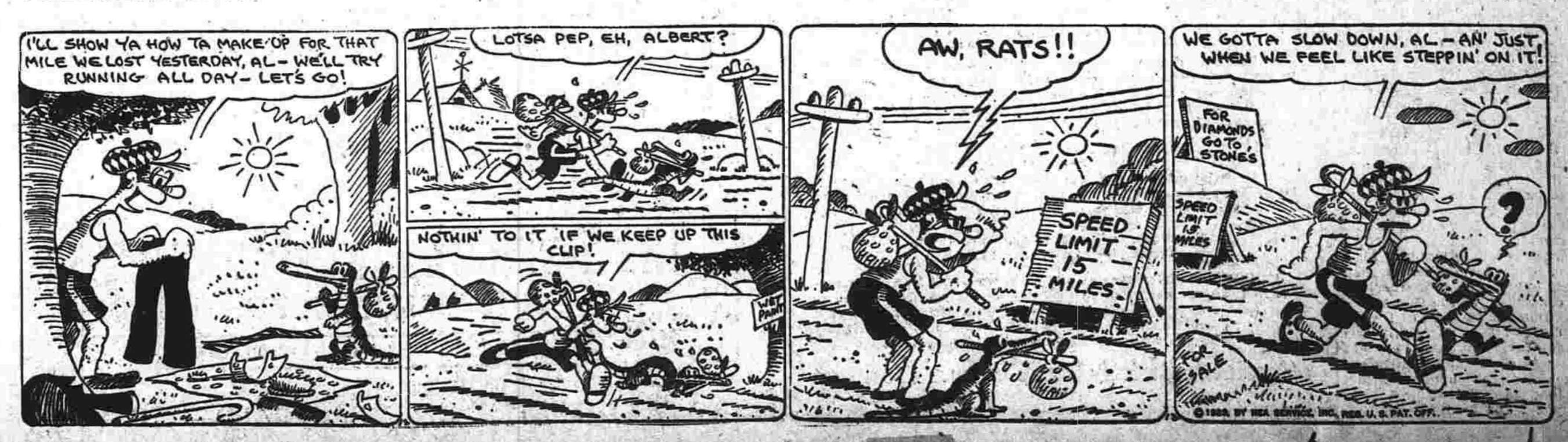
King!

By Blosser

SALESMAN SAM

A Drawback

By Small



Modern and Old-Fashioned DANCING EVERY WEDNESDAY AND SATURDAY JENCKS' LONE OAK HALL Pleasant Valley 8:30 to 12:30

ABOUT TOWN

Town Clerk Samuel Turkington and his sister, Miss Mae Turkington, are in Boston today attending the graduation exercises of the Bentley School of Accounting and Finance.

Mr. and Mrs. George Collins, parents of Mrs. Arthur W. Woodbridge of Manchester Green, who formerly lived here, have moved from northern Vermont to the apartment in the same house with their daughter, formerly occupied by George W. Woodbridge.

Rehearsals were held this afternoon at Center church for the children's day exercises next Sunday. The next rehearsal for nursery, kindergarten and primary children will be held at the church Friday afternoon at 3:30.

Leaders and young people workers will meet for a special council at the Salvation Army citadel tonight at 7:30. It is important that all be present.

Andrew Ferguson of Birch street, with a party of four Willimantic friends, left today for a fishing trip to Nova Scotia. They have engaged guides and expect to remain in the wilds for about ten days.

Harry Roth of Watkins Brothers' drapery department is in Boston on a business trip.

The sewing circle of the Highland Park Community club held its regular session this afternoon.

A meeting of the committee that is to have charge of the strawberry festival at St. Mary's Episcopal church on June 21, will be held this evening.

The committee in charge of the Church Vacation school for north end children will meet with Miss Ethel Fish, 217 North Elm street, tomorrow evening at 7 o'clock.

The Past Matrons' association of Temple Chapter, O. E. S., will hold its monthly meeting tomorrow evening with Mrs. L. N. Heebner of Park street.

Mrs. Adelaide Shelton, royal matron of Chapman Court, Order of Amaranth, was conductress at the meeting of Floral Court of Hartford last evening. It was visiting matrons and patrons' night.

Invitations have been sent out for the annual party for the nursery and kindergarten children of Congregational Sunday school. It will be held Saturday afternoon from 3 to 5, at the Lincoln school. All the children and their mothers are expected.

Mrs. Adele Bantly, grand royal matron, will make her official visit to Floral Court, Order of Amaranth, Hartford, tomorrow evening.

Parents interested will be welcome to attend the monthly meeting of the Child Study club tomorrow evening at 8 o'clock at Sunnyside Private school, 217 North Elm street. This meeting will follow that of the instructors and committee of the Church Vacation school.

HIGH SCHOOL NOTES

The Hi-Y Club will close a very successful year's activities with a trip to the Hebron Game Club this Saturday. Under the leadership of President Leslie Buckland the club has inaugurated several new features which promise to become annual affairs, notably the Hi-Y Hop. A large majority of the present members are seniors and one of the purposes of the trip to Hebron will be to initiate several underclassmen, and then to elect officers for next year.

The sporting goods department of Montgomery Ward's has presented "Jimmy" O'Leary third baseman of the high school team, with a fine fielder's glove in recognition of the fact that he hit the first—and incidentally, last and only—home run to be made by a member of the high school team. In spite of the fact that he is only a freshman, O'Leary has made his letter in both baseball and track—a feat that is seldom accomplished, even by members of the upper-classes, because of the fact that the schedules of both sports conflict to a great extent, making it impossible for a member of the baseball team to be in a large percentage of the track meets.

The final chapter of intra-mural sports for the year 1928-29, will be written this Friday when the finals in the interclass baseball series will be played. Today the seniors will play the juniors and Friday the winner of the game will play the winner of the freshman-sophomore game. To date the interclass honors have been fairly distributed with each class except the juniors winning one title, the seniors winning in track the freshmen in swimming and the sophomores in football. If either of these teams win the baseball series it will also gain the inter-class championship, by virtue of having won more series than any other class.

In order to assure material for a winning tennis team for next year, a tennis elimination tournament is being conducted. In the first match Leslie Dotchin defeated Horace Burr, 6-2 and 6-1; Carrie Cumberly defeated Raymond Johnson, 14-12 and 6-4; in the final match in the first round of the upper bracket Roy Johnson defeated Lincoln Murphy, 4-2 and 4-4.

SAFEGUARD HOSPITAL AGAINST FILM FIRE

Not Single Negative Has Been Destroyed and All Danger Has Been Eliminated.

In keeping with the precaution exercised in all hospitals about the country following the recent Cleveland Clinic disaster, the Manchester Memorial hospital has been able to safeguard itself against a similar calamity without destroying a single X-ray film. It was announced today by F. A. Verplanck, secretary of the Board of Trustees of the local institution.

A statement prepared by the Board of Trustees and signed by them through Mr. Verplanck, was given The Herald today for publication. It reads as follows: "Following the Cleveland tragedy, the trustees of the Manchester Memorial hospital made a thorough investigation of the possible fire hazard in connection with the storage of X-ray films at the local institution. As a result and following the best advice, only a very few films, mostly those of some patient not yet discharged from the hospital, are kept in the X-ray room. All other films have been removed and placed in a fireproof safe outside the main hospital building. "The trustees have been advised not to destroy any films less than five years old. To date NO films whatever have been destroyed. "It is of interest to note that experts agree that the possibility of trouble is not from spontaneous combustion as some have thought, but from outside fire hazard. Films are very inflammable, and, when fire touches them, a gas is formed. This is very poisonous, but, if the films are located so that this gas can be readily dissipated in the open air, there is practically no danger."

WARD CO. PLANNING BIG ADVERTISING PROGRAM

Series of Promotional Ads. in Leading Magazine to Tie Up With Local Newspapers.

Recently Montgomery Ward & Co., nation-wide merchandising and chain store organization, has announced a series of national advertisements to be run in the leading weekly magazine in the U. S. A. and as a result, great interest has been aroused in the advertising world.

The retail world sees in this a far-reaching step, significant of the development of a retail expansion program, begun about two years ago, when Montgomery Ward & Co. announced its intention of opening 1,500 stores within five years. The company already has put into operation almost 400 stores, and the new national advertising program is seen as a wise business move to develop additional business and customers in the new trade centers in which these stores are located.

Commenting on this new development, Mr. Wilkie, manager of the local Montgomery Ward & Co. store, said: "With our expansion into new retail fields, we recognize the entire country as a market for our merchandise. The appeal is general, reaching urban as well as rural residents—in fact, it extends to all classes of our entire population. "Our national advertising," says Mr. Wilkie, "will in no way change the local advertising program, but will assure more than ever the use of the local newspapers as profitable advertising media. Our advertising in the Manchester Herald will feature the same items described in the national series at the same time the magazine advertisement is released. Local papers are most essential to us for a complete advertising tie-up. "We realize, as do all up-to-date

WALTZ TEMPORARILY ON MIDDLETOWN LINE

Slayden and Cleveland Operate Busses as Tomlinson and Nichols Go on Spare List.

Gus Waltz, well known motorman on the Manchester Green and Cross-town trolley lines, now disbanded, for over thirty years, has temporarily taken a Middletown run from Hartford. In order to qualify for this line, Waltz had to take a special railroad examination

due to the fact that the trolley cars run on the steam train lines from Cromwell to Middletown. He had no difficulty passing the test which largely concerned the proper detection of color signals.

It is understood that Waltz plans to stay on the Middletown run until the next bid-in for new runs which doesn't take place until fall. At that time he is expected to seek a Manchester or Rockville line so as to be nearer his home here. Due to his seniority rights because of

many years of service, it is expected that he will have comparatively little difficulty in selecting a run to his own liking.

Harry Slayden and George Cleveland, two other local trolley men, have already started their new duties driving the busses. Slayden works daytime on the Crosstown line being relieved by Cleveland at night. Two Hartford men take care of the Green bus with another one as relief man. Thomas Tomlinson and Frank Nichols have gone on the spare board.

Hartford Tailoring Co. We Make Suits for \$25 and up

The Best Cleaning and Dyeing in South Manchester ALL KINDS OF REPAIRING NICK DELLA FERA Proprietor 15 Oak Street

A mosquito has 22 teeth, all of which can be seen through a microscope.

Special Bargains For Community Days

Thursday, Friday and Saturday

- Men's Neckwear, Special price 79c-98c
Men's Fancy Hose, 50c value 3 for \$1.00 39c
Men's Soft Collars, odd lots each 5c
Men's White and Fancy Collar attached Shirts, \$2.00 values \$1.50
Men's \$1.50 values Shirts \$1.39 each.
Men's Caps, \$1.50 and \$2.00 values \$1.39
10% off on all Straw and Panama Hats
Men's Athletic Underwear, \$1.00 value 79c
Men's Sweaters 20% discount.
20% discount on Men's Dress and Work Trousers
Men's Overalls and Jackets, \$2.50 value \$1.89
Men's Waist Overalls, \$2.00 value \$1.79
Men's Dress Shoes and Oxfords \$1.00 discount.
\$1.00 off on Women's Pumps and Oxfords
Boys' and Girls' Shoes at reduced prices
Women's Silk Hose, \$1.50 value \$1.19
Odd Lots of Holeproof Hose, \$1.95 value \$1.19

A. L. BROWN & CO. DEPOT SQUARE

The Average Man

Not his fault—blame it on modern methods. Comfortable traveling, white collar jobs and the national habit of recreation in the family car! No time left for exercise. That's why "modern methods" invented the

Graybar Stimulator

A reasonably priced health motor—small enough to be unobtrusive, large enough to do the work. Attaches to any electric outlet (just specify current and voltage). Has three steps or three degrees of stimulation. Sets on any table; anchors to floor or baseboard. Has two belts—a narrow one and a wide one. No oil leaks; no marring of furniture. Exceptionally attractive with its ivory finish and polished aluminum housing.



The Condensed Daily Dozen An Easy Way to Keep Fit

A Special Demonstration Will Be Held in Our Front Window Thursday Night From 5 to 9 o'clock

The J.W. Hale Company SOUTH MANCHESTER, CONN.

The new Jantzen 'Twosome' combines smartness with swimming freedom

NEWEST of models is the Jantzen "Twosome!" Distinctive two-piece appearance... the comfort and swimming freedom of a one-piece suit. Plain and bizarre-striped uppers, white-belted trunks of navy blue. This is the suit you'll see smart folk wearing at all the fashionable beaches... at Miami, Atlantic City, Brighton, Deauville... almost everywhere.

Many are the reasons why world-wide favor has turned to Jantzen. Foremost is its perfect fit. Tightly knitted from long-fibred-wool by the Jantzen-stitch process, a Jantzen graces your body lightly, snugly, smoothly... without a wrinkle. Being extremely elastic, it retains its shape.

See the new models now on display here! Solid colors, bright hues, gala stripes. Color-fast; being literally dyed-in-the-wool. Jantzen's size-by-weight system assures you a perfect fit.

Ask for your copy of the "Jantzen Color Harmony Guide". The key to individual harmonious swimming attire.

- Men - \$...
Women - \$...
Youths - \$...
Children - \$...

GLENNEY'S

The suit that changed bathing to swimming

Graduation Cards

Mrs. Elliott's Shop Room 4, Park Building

COAL FUEL OIL

IF YOU HAVE AN OIL BURNER you have appreciated its convenience these past weeks of cold nights and mornings. With a tank full of our high grade fuel oil it has automatically kept your house comfortable.

G. E. WILLIS & SON INC. Sole Agents for Old Company's Lehigh Coal. 2 Main St. Phone 50

WATKINS BROTHERS, Inc. Funeral Directors

ESTABLISHED 54 YEARS CHAPEL AT 11 OAK ST. Robert K. Anderson, Funeral Director Phone 500 or 2837-W

TO RENT Store In State Theater

Bissell Street Side Suitable for Any Line of Business. Rent Very Reasonable Inquire Manager State Theater

THE SAVINGS BANK OF MANCHESTER

SOUTH MANCHESTER, CONN. ESTABLISHED 1906

ADVERTISE IN THE HERALD—IT PAYS

PHONES Pinehurst "GOOD THINGS TO EAT" Fresh Lamb Patties 4 for 33c FRESH FISH For Meat Loaf or Meat Balls Pinehurst Round Ground at 49c a lb., or Pinehurst Hamburg at 30c a lb. is ground fresh for your order. STEWS, SOUPS, STEAKS FRESH VEGETABLES Special on Strictly Fresh Eggs... 45c dozen

The Happy Saver Happy is the man or woman, boy or girl, who saves something every week and deposits it promptly with the Savings Bank of Manchester where it is secure and yields a good income. 4 1/2 Interest Paid, compounded quarterly. THE SAVINGS BANK OF MANCHESTER SOUTH MANCHESTER, CONN. ESTABLISHED 1906 ADVERTISE IN THE HERALD—IT PAYS

The Average Man Not his fault—blame it on modern methods. Comfortable traveling, white collar jobs and the national habit of recreation in the family car! No time left for exercise. That's why "modern methods" invented the Graybar Stimulator A reasonably priced health motor—small enough to be unobtrusive, large enough to do the work. Attaches to any electric outlet (just specify current and voltage). Has three steps or three degrees of stimulation. Sets on any table; anchors to floor or baseboard. Has two belts—a narrow one and a wide one. No oil leaks; no marring of furniture. Exceptionally attractive with its ivory finish and polished aluminum housing. The Condensed Daily Dozen An Easy Way to Keep Fit A Special Demonstration Will Be Held in Our Front Window Thursday Night From 5 to 9 o'clock The J.W. Hale Company SOUTH MANCHESTER, CONN.

LOANS... \$10 to \$300 Quick Service STRICT PRIVACY Convenient Repayments Personal Finance Co. Rooms 2 and 3, State Theater Building 2nd Floor, 753 Main St. Open 8:30 to 5, Phone 1-0-4 Saturday 8:30 to 1 Licensed by the State

WATKINS BROTHERS, Inc. Funeral Directors ESTABLISHED 54 YEARS CHAPEL AT 11 OAK ST. Robert K. Anderson, Funeral Director Phone 500 or 2837-W

TO RENT Store In State Theater Bissell Street Side Suitable for Any Line of Business. Rent Very Reasonable Inquire Manager State Theater

MANCHESTER COMMUNITY DAYS JUNE 13, 14, 15



These signposts, with their full rigged, 15th century ships sailing over swelling seas, welcome you to Manchester on all main roads leading into town.

MANCHESTER stores bring you all the advantages of city shopping without city disadvantages.

Large stores and small stores...department stores and specialty shops...chain stores and stores that participate in syndicate buying.

Large assortments of every kind of merchandise is represented. Merchandise that is styled right by regular visits to the leading markets of the country...New York, Boston, Chicago, Grand Rapids...by representatives of the stores. Merchandise that is priced right through large quantity, syndicate and chain buying.

In addition, Manchester stores are within easy reach of town and cities for miles around. Fine state roads make shopping by auto a pleasure. Trains, Trolleys and busses bring these stores within easy reach of those who do not drive.

Ample unrestricted parking spaces on the wide Main Street and its many side streets eliminate parking problems.

Many stores have private parking spaces for the use of customers where cars may be parked for an indefinite time.

Here at Manchester is truly a metropolitan shopping center without the disadvantages of big city shopping.

The Merchants represented in this special Community Days edition invite you to become more fully acquainted with the service of their stores by participating in the special values in styled-right merchandise available not only on Community Days but every other business day of the year!

During June, July and August Manchester stores will be closed Wednesdays at noon. Open as usual on Thursday and Saturday evenings until 9 p. m.

"MAKE MANCHESTER YOUR SHOPPING CENTER"

Community Days Stores

Here are the leading Manchester stores which are cooperating in bringing this message of better styled and better priced merchandise to you. Visit their stores when you shop at Manchester. You'll know them by the Community Day signs they will display in their windows.

F. T. Blish Hardware Co.
Robert Donnelly
Dunhill's
Dewey-Richman Co.
Fradin's
William H. Gardner
Glennay
Green Stores
W. T. Grant Company
J. W. Hale Company
Edward Hess
Arthur L. Hultman
C. E. House & Son, Inc.
Home Electric Appliance Corp.
Home Bank & Trust Co.
George E. Keith Furniture Co.
Kemp's Music House
Manchester Plumbing & Supply Co.
N. Marlow & Co.
Miner's Pharmacy
Manchester Trust Co.
Modern Dyers and Cleaners
The Manchester Electric Co.
Montgomery Ward & Co.
Manchester Public Market
Milikowski, the Florist
Nelleg
John I. Olson
Packard's Pharmacy
Pinehurst Grocery Co.
Park Hill Flower Shop
James H. Quinn
Rubinow's
M. H. Strickland
Self Serve Shoe Store
Symington's Men's Shop
Smart Shop
So. Manchester Cany Kitchen
The Textile Store
Clinton H. Tryon
Watkins Brothers, Inc.
George H. Williams

Do You Know Salad Greens?

To know your salad greens means that you know salads themselves from beginning to end, for the salad green is the background of the salad, and often the whole salad itself. Its flavor and its tenderness and its crispness determine what the rest of the salad shall be, what dressing shall be used, what the body of the salad may be and just what light bit of starchy accompaniment will produce a perfect blending of flavors that "eat well." Salads must eat on all family menus, properly fulfilled their function. How, then, will knowing your salad greens guarantee that your salads will be looked upon with expectancy and eaten with relish?

The answer to this is simple, for in knowing any food you first must know its flavor—not only know how it tastes to you but what its outstanding characteristic is and with what other foods it blends. Take, for instance, romaine. Its rather large leaves are firm, but tender in texture and quite delicate in flavor. It thus blends perfectly with a mild French dressing, served either in whole leaves or cut crosswise into tendrils. Its tenderness and delicacy are important in use in combinations. Vegetables such as tomatoes, or fruits such as oranges, are good choices. Endive, though smaller in size and more delicate in color, has a pronounced "bite" which is appetizing and satisfying. Its leaves are usually served whole, with each often placed on one of romaine, and dressed with French dressing seasoned with chopped new onion and made with orange juice. Escarole, being of the same family, has the same tendencies of flavor, with leaves greener, thicker and more curly, but no less tender. It, too, can be used alone or with many of the frozen salads. Of spinach, only the tender inside leaves are used. They are marvelously pleasing in a flavor which gives just the right balance to hearty salads such as potato, chicory and dandelion have the same "pepperyness" as escarole and romaine, so are popular with men and boys whose hearty appetites demand determined flavors. These are incomparable serve with dressing made of fat freshly cooked from bacon, or with sharp French dressing. Peppermint and the more salty water cress are ideal for smooth, molded salads. As for salad "cups", none are more perfect than the sweet, white, crisp, inside leaves of new cabbage.

EDUCATION IN BEAUTY AN INTRINSIC NEED

Clothes Designers Strive to Have Their Products Conform to Beauty's Laws.

By Annette
There is nothing in all education, says Robert Bridges, "of more intrinsic need than education in beauty." This the clothes designers have long known and increasingly recognized. And since education can only be attained by absorbing facts already known and discovered, they are doing a mighty effective work in making available to all women apparel fashioned in complete conformity with beauty's laws.

Visual beauty consists of three constituents, color, form and line, and when these conform to natural laws the ultimate of perfection is attained. I make the statement first, leaving the analysis for later. Let us regard the waist line, which is now more nearly normal than since the wasp waist era. That was a cruel caricature, so was deemed to die a slow and abnormal death. Today's silhouette with its gracious accentuations of the feminine figure by means of princess lines, swathed girdles, molded bodices, as nearly approaches the feminine ideal as anything yet conceived. Having determined upon a course of natural grace, the designers have created skirts which intensify rather than negative their objective.

Thus flare and sweep become even more exaggerated, since the lines of grace are the long lines that carry the eye toward the body extremes—that is ankles and feet. Hems, still with a preference toward the backward dip, reaching to the heels of one's footwear, are now not uncommon for formal wear. And not modesty but beauty dictates that the knees should be covered.

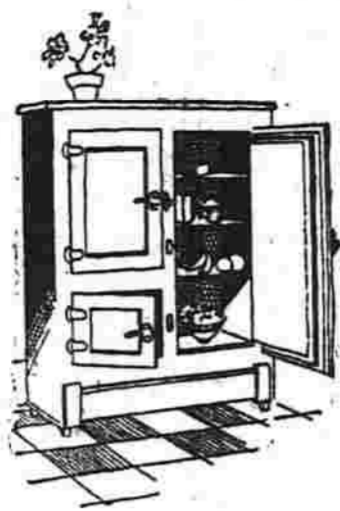
SPORTS MODES OCCUPY THE DESIGNER'S MIND

The active sports mode decrees sleeveless frocks with deep U backs, especially for tennis. Skirts are variously styled with fullness resulting from pleated arrangements, wide circular cuts, deep or shallow godet insets. Width for activity, play for arms and legs, no restrictive trimming around the shoulders or neck is the decree. Hence what trimming detail there is corresponds to the sculptured frieze or has-relief-up effect achieved by means of self-fabric straps, applied bands, cordings and stitched bows.

The ubiquitous jacket gives still another form to the designer's creation, for even if the active sports costume is molded, the jacket is usually, though not always, straight-line. Where it isn't, it has a shoulder flare, restrained as to width, but so far there has been no evidence of the molded jacket for sports.

The spectator sports mode runs almost exclusively to ensembles which stress combinations of fabric. Either analogous harmony dictates the color combinations or the use of plain and printed fabrics effects the modulation desired.

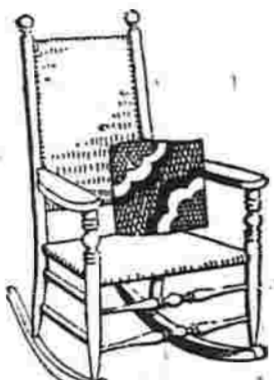
CLOSED WEDNESDAY AT NOON DURING JUNE, JULY AND AUGUST



Porcelain Refrigerators

These genuine Leonard refrigerators are lined with a one-piece porcelain lining, and are as easy to keep clean as a china dish! This model holds 50 lbs. of ice and has three roomy wire shelves for food.

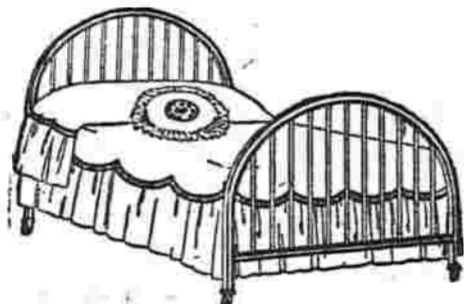
\$37



Porch Rockers

Nothing is so comfortable for the open porch as these sturdy, New England made porch rockers with their high backs and wide arms. They are made of selected maple, finished natural, with double-woven cane seats and backs.

\$4.95



Twin Windsor Beds

The Windsor bed is probably our most popular metal bed. This model comes in twin sizes only, in grained walnut finish with two-inch continuous posts and 5 fillers. Ideal for guest rooms and summer cottages, each

\$9.45



Tea Wagons

Here is a gift that is always popular. These wagons have round drop leaves with automatic catches, drop handles and removable trays. They are made of American gumwood, finished walnut.

\$17.50



Martha Washington Arm Chairs

A Martha Washington chair, like this, in its small figured damask covering, will bring a new note of color into your room, or add another comfortable chair without overcrowding. Frames, with exception of the back legs, are of solid mahogany.

\$37

FREE PARKING

We maintain our own private parking space at the rear of our store where customers may park their cars as long as they like. Use this parking privilege when shopping in Manchester.



Wedding Gifts

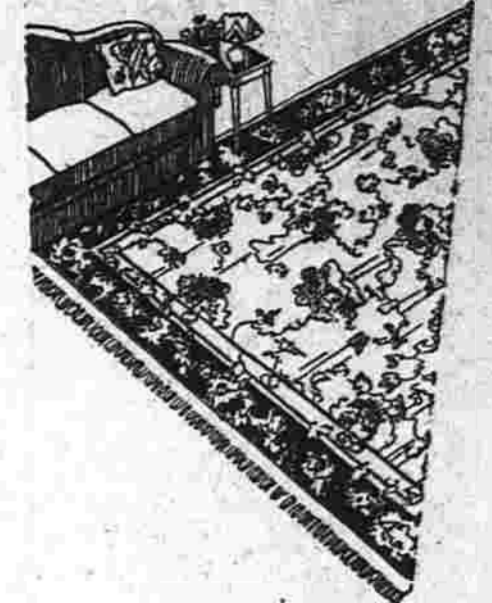
Pictures, mirrors, lamps, occasional table for every purpose and hundreds of other gift items are awaiting gift seekers here... and every piece bears the Watkins "seals of satisfaction" so you'll be proud of the gifts you give.



Gateleg Tables

Good gateleg tables are always in vogue. This Watkins reproduction is of solid mahogany, finely finished in the popular Colonial red color. The eight legs are correctly turned, and there is a drawer under the top.

\$16.95



9x12 Feet Axminster Rugs

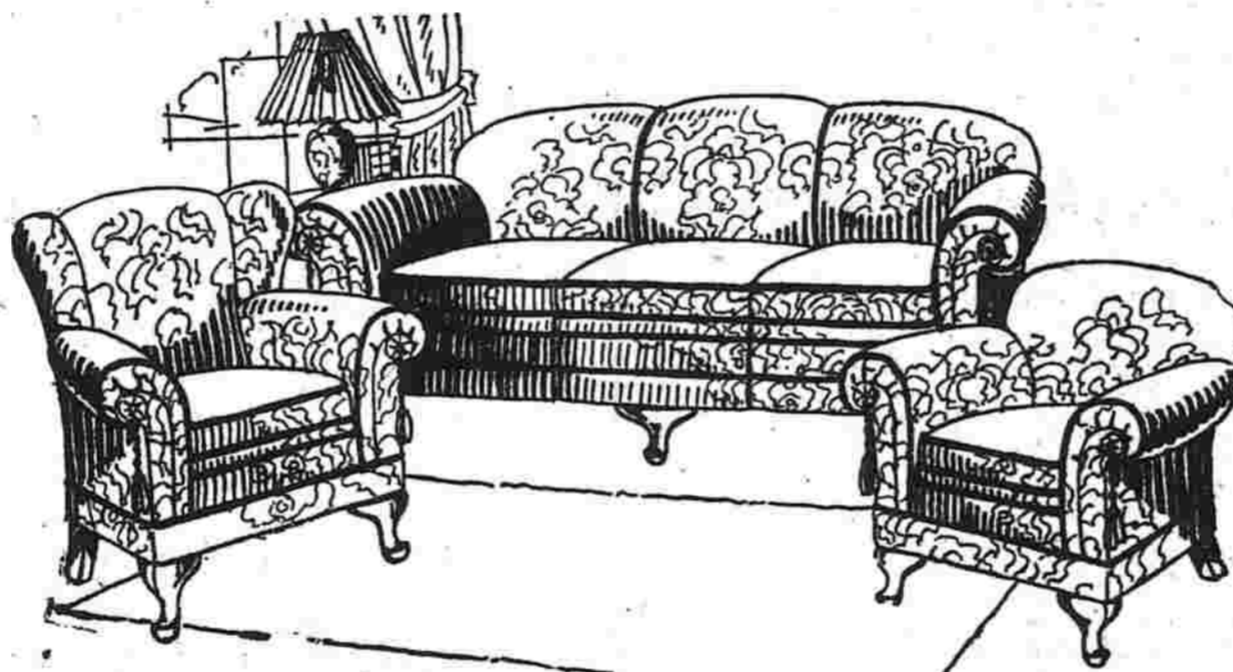
\$39.75

The fine oriental patterns, reproduced from fine old rugs, and the soft, rich colorings of these high-grade rugs will set off your dining room, living room or bedroom suite to the best advantage. Made only as Bigelow-Hartford can make them, they cannot be compared to ordinary Axminster rugs.

Smaller Sizes to 22 1/2 x 36 inches

Community Days at Watkins
Bring Special Values for
June Brides of Today and Yesterday

THE June bride of this year is not the only one who will find these Community Days values of interest, for brides of last year... and the years before... often find that a piece or two, or a whole room outfit is needed to finish or freshen her decorative schemes. Here at Watkins Brothers you will always find such values as these... and many many more... together with expert decorating advice. No matter how much or little you select here, this decorating service is available to you. Be sure to see these special features, and the many others at our store, during Community Days June 13, 14 and 15th.

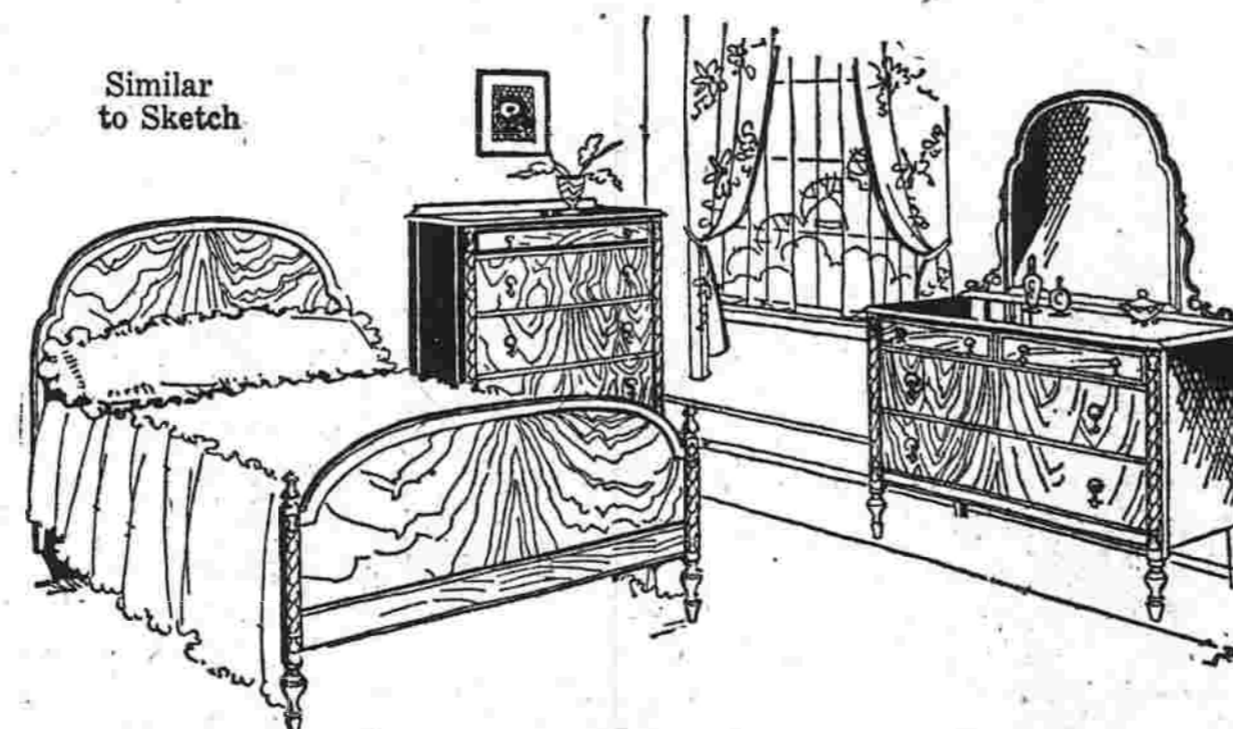


Three Living Room Pieces \$129

Comfort is built into every piece of Watkins upholstered furniture... and it must be lasting comfort, too. This group, consisting of wing chair, club chair and davenport, is built with webbing throughout, and

well-tailored. Plain taupe mohair and taupe velour are combined on the pieces, with a colorful moquette velour on one side of the reversible, spring filled seat cushions.

Similar to Sketch



A Four Piece Bedroom Ensemble \$129

American walnut and gumwood, with mahogany veneers on the top drawers of the cabinet pieces, are the woods selected in fashioning this four piece bedroom group. A full size bed in either poster or paneled

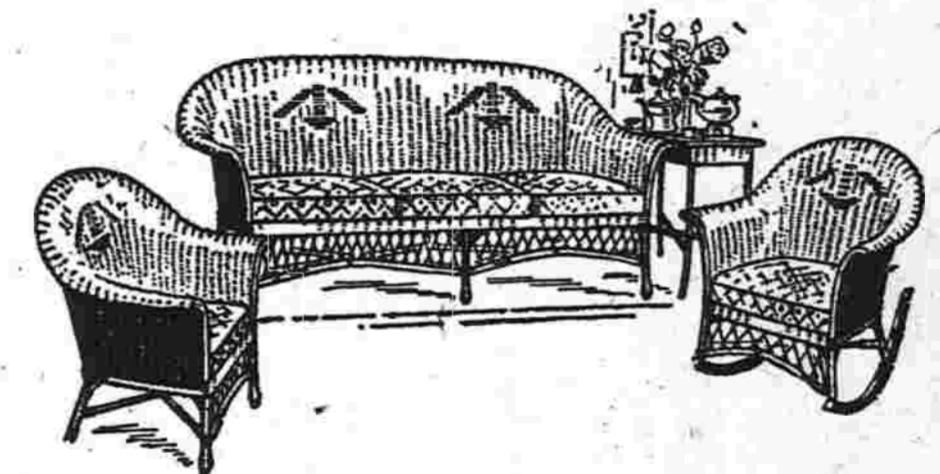
style, a large dresser, a French vanity dresser and a chest of drawers with an extra deck on top having two drawers, are the pieces included.



Similar to sketch

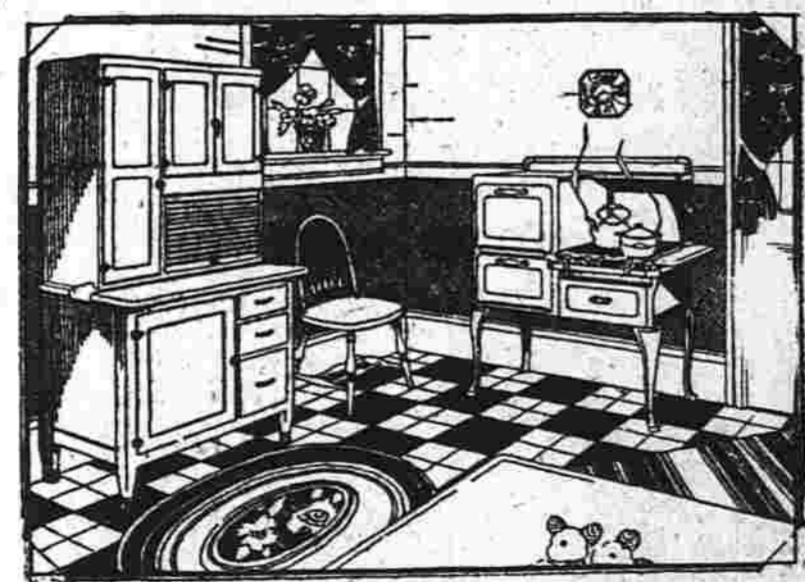
9 English Dining Room Pieces \$129

American walnut, combined with choice gumwood and overlaid with maple, has been used in fashioning this group of Early English pieces. True to the period, the legs and stretchers are sturdy and attractively turned. Extension table, buffet, china cabinet, arm chair and 5 side chairs included.



Three Smart Fiber Pieces \$49

The pieces in this ensemble are all full sized... full length, three cushion davenport, a rocker and an arm chair. The pieces are finished in pumpkin color with decorations in orange and purple! The cretonne used on the spring seats harmonizes with the finish of the fiber.



7-Piece Kitchen Outfit \$99.50

A genuine Hoosier kitchen cabinet, with all the famous labor and step saving features is included with this grouping. A Hoosier breakfast suite consisting of a drop-leaf table and 4 Windsor chairs, and a cabinet gas range complete the outfit. The cabinet and breakfast suite are finished to match.

WATKINS BROTHERS, Inc.
54 YEARS at SOUTH MANCHESTER

DECORATING SERVICE

Our experienced decorating staff, as well as our trained salespeople, are at the service of all customers, no matter how big or small the problem. Let them help you.



Jacket Costume Is Quite Proper All Through Day

The jacket costume is good at all hours of the day, from sunrise to sunrise. In fact, it is fashion's most versatile favorite and is found frankly being itself or masquerading in many a "marming" disguise, appropriating to its uses every fabric, sauntering forth with equal ease under sun and st. light.

With the entrance of the jacket into the realm of what might almost be called high fashion, the smart woman who rejoices in comfort and in those things which are distinctly "wearable," greets this one-time stepchild of the mode with open arms. She appreciates its great possibilities, its definite contribution to the ensemble, the variety it can lend her wardrobe, its air of simple chic, in short, its consummate importance.

"Why," she asks, "when the men did away with all the fancies and foppishness of dress, the tuffies and satins, buckles and bows that were once so characteristic of masculine attire, what did they salvage from the heap and take as their mode of dress? Of course, the jacket costume!"

Today the influence of this jacket mode has permeated everything. One watches it slip up and, after catching the sports mode unaware take the whole field by storm. It draws a softly rippled line about the frocks for semi-formal afternoon; then with the most monochromatic air in the world throws its charm around the shoulders of the evening gown.

The jacket is easily the heroine in the sports field. Here its practicality is its strong recommendation. What would the low cut U sports dress be without its jacket for that moment when its wearer shall have finished her active participation in the sport in which she engages? She must have a light wrap to throw around her shoulders as she sits to rest a moment after the game, or strolls off with her escort in search of an ice.

Many fabrics offer themselves as suitable media for these gay sports frocks. Flannel, jersey, novelty light-weight wools, silk and wool mixtures and, of course, cotton, all have their enthusiasts. Among the cottons the plain and printed plaques deserve special mention together with hand blocked linen and eponge.

Among the colors appearing for active sports gay blazer stripes are conspicuous (in more ways than one). Plaids and checks too are making the most of these days of color. More traditional and conservative come the plain bright hues: citron, brown, red, green and, for the sophisticate who likes it, black.

This sports jacket may have either a definite ensemble feeling (produced by color, fabric or a tie-up through an appliqued motif) or be frankly separate and worn with any one of a dozen skirts or frocks.

With the softly feminine lines and "dressmaker" frocks of semi-formal afternoon, the smart jacket changes its nature. Here one finds the winsome printed jacket ensembles in those peasant prints inspired by the peasant costumes of France, prints the borders of which constitute a piquant element of their charm, particularly when used by a clever hand to outline the short jacket. Flat crepe is considered by many to be the fabric best to interpret these.

When made up in satin crepe, crepe de chine, and crepe faille, the jacket is often separate and distinct from its frock. Wisely chosen, it makes several afternoon dresses take on decidedly new aspects when worn with it in turn. For instance, a plain chiffon jacket forms an admirable complement to a printed chiffon frock and also to a plain chiffon frock in matching or in contrasting shade. Worn with a plain colored jacket in satin, crepe de chine or faille, a plain frock of contrasting tint is very smart.

After sundown the jacket mode becomes softer and more elegant. Lace, chiffons and metal cloth are its most sympathetic media. For the woman who does not entirely know her own mind, a lace jacket to be worn with a lace frock is perhaps a safe selection. Chiffons are used somewhat similarly to those employed for afternoon, while jackets of metal cloth, being independent, accompany gowns of contrast fabrics, while jackets of metal cloth, being independent, accompany gowns of contrasting fabrics. One most attractive ensemble is composed of a chiffon frock trimmed with an enchanting lace, worn with a delicate lace jacket. Nothing could be more in tune with summer evenings.

attract considerable attention sponsored a shoulder yoke which continued in an amusing fashion down onto the sleeves. Another styling to receive special comment was bias effect on the jacket, cut in such a way as to accent the waistline and include trig, little side pockets.

Now a pertinent question remains to be answered. How long or how short shall the jacket be? It may stop at the bolero line or continue, down to three-quarter length and be quite correct. Anything between these two lengths is very much in the picture. Understanding this, the smart woman will select that style which is most becoming to her. The long jacket lends itself more easily to dainty feminizing touches. If one wishes to accent the softer moods this is unquestionably the wise choice. In favor of the short jacket it may be urged that it is a step nearer the tailleur which has been more prominent this past spring than ever before.

There is nothing quite equal to a jacket for comfort, for convenience, and for making two frocks out of

one. A mandate was issued not long ago by no less person than Paul Poiret to the effect that every woman who pretends to be well dressed must have three hundred dresses a year. Amid the chorus of groans from amid the gallery of husbands he hastened to assure them that three hundred frocks need not be so alarming to the wardrobe winner, for with clever and appropriate touches here and there by knowing hands, one frock may become two or three or even four. The jacket is one of those clever and appropriate touches.

MUCH VARIETY NOW AMONG SHEER FABRICS

Rayon, Voiles, Checked Ginghams and Laces Are the Mode for This Summer's Wear.

Quite sensibly women will clothe themselves in the sheerest available fabrics and so in addition to the

sheer silk crepes and chiffons already noted a multiplicity of synthetic fabrics have been created, chief among which are those developed from rayon, Celanese and Bemberg yarns.

Voiles, gayly colorful in their charming floral prints, or demure in more conservative geometric motifs are among the fabric coterie and are receiving strong support for morning and informal frocks, and organdie is also highly approved. Checks have been endorsed and so a revival of cotton, gingham and linen is surely on its way for summer frocks, the majority of which are designed without sleeves.

Laces are following all other fabrics in a predilection for colors. Whereas once laces rarely varied between black and beige and ecru, they are now available in every conceivable tint and color. Green, yellow, tan, blue, orchid, what you will, they are all represented. Nor need your lace be all silk, for laces, too, have been rayonized, and lowly indeed, as well as more economically, are the cobwebby synthetic fabrics which may be bought today.



**Regardless Of Cost—
Regardless Of Profit
WE NOW REDUCE THE PRICES**

Of our entire stock of highest grade clothing seldom have you had the opportunity to buy the smartest style clothes made—at such reductions.

33 1/3 % off

Blues excepted. Alterations at no extra cost. Remember a \$30 suit costs you only \$20.00 during Community Days, June 13-14-15. You save \$10 during that time.

Don't forget, you can use our 10 Payment Plan in paying for your clothing, \$10 down and the balance in 10 equal Weekly Payments.



STRAW HATS
\$1.00

KHAKI PANTS
Real Value
\$1.00

SHOES ODD SIZES Mostly Tans—Real Value **\$2.00**

GEO. WILLIAMS INC.

711 Main Street,

CAPS
Regular \$1.95
Community Days
\$1.50

NECKWEAR
We have taken several dozens of our \$1.00 ties—and for Community Days
50c

OVERALLS
You cannot duplicate these for the money. Imagine a Blue Denim for
79c

SHIRTS
Odd lots, odd sizes, solid colors, fancy patterns. Extra value.
\$1.00

SHOP AT KEITH'S DURING COMMUNITY DAYS

Keith's

"Where You Can Afford to Buy Good Furniture"

JUNE BRIDES

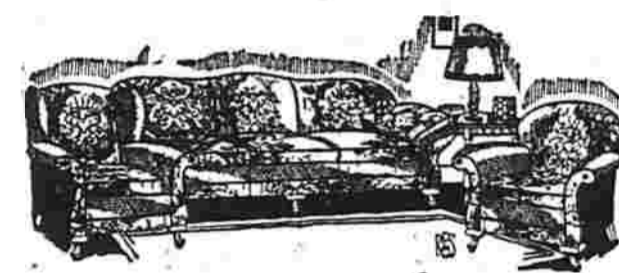
Of This and Other Years
Here Are Furniture Offerings Worthy Of Your Best Attention---During

COMMUNITY DAYS

JUNE 13-14-15

Whether yours is a wedding-to-be, or an anniversary—or just a need of new things for the home you will find at Keith's during the entire month of June furniture offerings that are truly worthy of your best attention. Complete suites, interesting odd pieces and June Gift Specials—and they're all here during Community Days.

THREE EXCEPTIONAL RANGE VALUES!



3 PIECE JACQUARD SUITE \$130

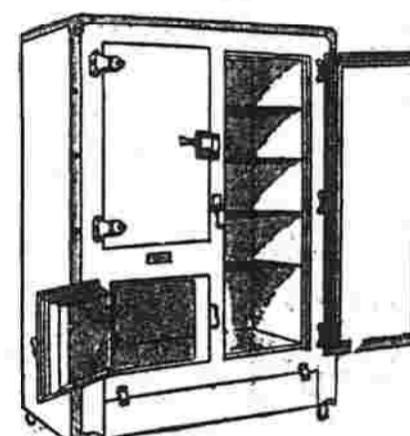
Three splendid pieces for the living room. Large sofa, club and wing chairs of fine web construction, covered all over in beautiful jacquard, including reverse cushions.



THE HOUSEHOLD LIBERTY \$130

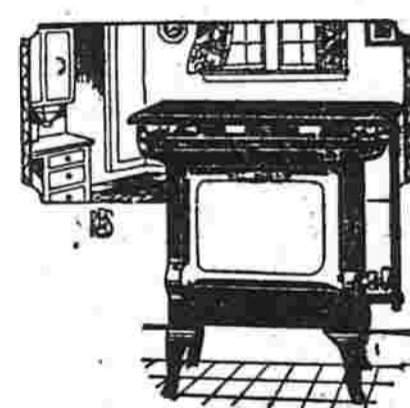
A full size combination range in black finish. Ideal for cooking and baking the year round, combining both a coal and gas range. In full grey enamel it costs but \$180.

JUNE GIFT SPECIALS



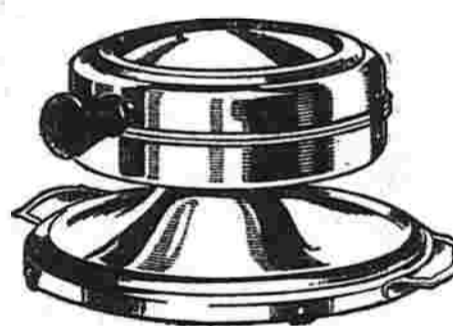
Thursday Only White Mountain Refrigerator in any color \$27.50

Here is the fourth of our six One Day Specials for this week—genuine White mountain refrigerators finished in beautiful lacquer colors to harmonize with any decorative scheme. Blue, Green, Grey, Ivory—any color you desire. Remember it is for Thursday only—see them now in our windows.



THREE BURNER GAS COOKER \$19.50

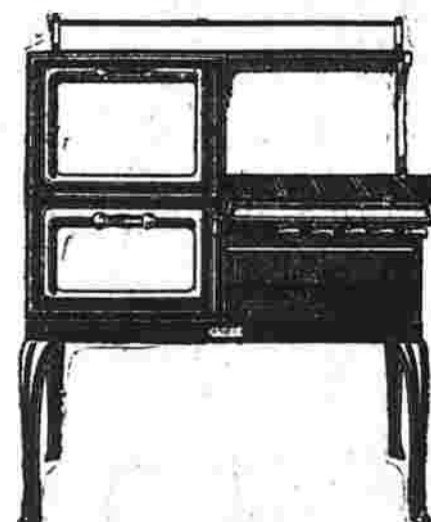
A sturdy gas range suitable for small family use. Has three top cooking burners with large oven below. One dollar weekly.



17 Pc. Electric WAFFLE SETS \$11.50

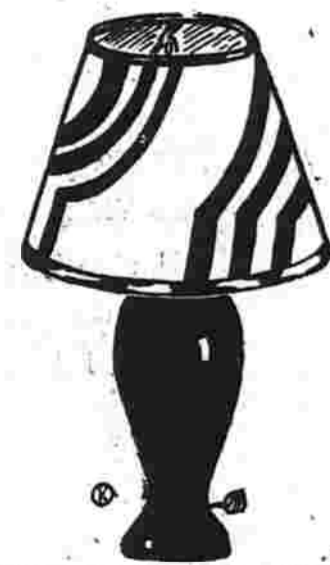
FRIDAY ONLY!

Everyone loves crisp, tasty waffles and they are easily made with this complete set. Includes Electric Waffle Iron, Batter Pitcher, Syrup Pitcher with plate, 4 Cups, 4 Saucers, 4 7-inch plates and one large service plate. Friday only!



CABINET GAS RANGE \$39.50

Excellent value in this full size cabinet range, finish in black japan with white enamel trim. Has four top cooking burners with side oven and broiler. One dollar weekly.



SATURDAY ONLY New Pottery BOUDOIR LAMPS 98c

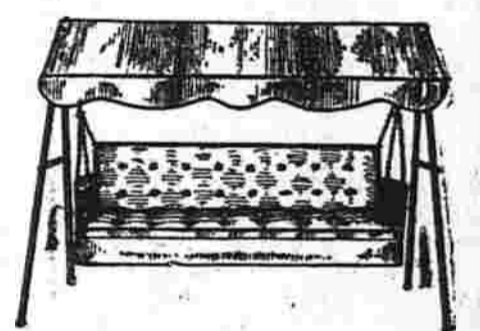
An extra large quantity purchase enables us to offer you these beautiful lamps at such a remarkably low price. Bases are of genuine Czechoslovakian pottery, highly glazed. Shades are of parchment with attractive modernistic painted design. Get yours early—Saturday only!

See These Gift Specials in the Windows at Both Stores.



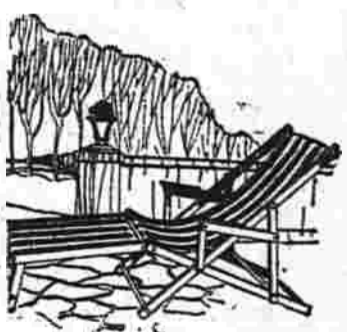
SWAYER \$17.25

Can be adjusted for either rocking or swaying motion. A genuine Comfort-Line model, durable upholstered and covered with attractive material in woven stripes.



HAMMOCK \$15.50

A splendid new upholstered back model, fully adjustable. Covered in heavy green duck with woven stripes in floral pattern.



STEAMER CHAIR \$4.95

You can have summer comfort anywhere with this folding steamer chair with detachable foot rest. Made of selected hardwood and heavy canvas.

RECLINING CHAIRS \$8.95

A new type of summer chair—it reclines automatically. Made of metal with heavy canvas seat and back. Two models—one stationary, one rocking.

The G. E. Keith Furniture Co.

Main Store Opp. High School

SOUTH MANCHESTER

Uptown Showrooms 825 Main St.

SEE THE BRIDE'S COTTAGE AT OUR UPTOWN SHOWROOMS.

Young Designers Create Summer's Paris Fashions



BY ALICE LANGELIER

Last month, when the invitations to the Spring Openings were issued, it required mercurial speed to get from one to the other of the haute couture, and a knowing Paris chauffeur came to our rescue so that we might report to you what was new in the realm of fashion. But then we found that there was nothing really cutting new there were no innovations to startle us or you, but a steady increase in the tendency toward which we have been gravitating for two seasons at least—greater femininity and elaboration.

Spring was very much delayed on the continent this year (even the races at Auteuil were set at a much later-than-usual date because of its tardiness in arriving), and when one went to the various places where the elegant dance, dine or otherwise disport themselves, one found that the untimely weather had had its retarding influence on the clothes that were being worn. Some looked definitely wintry, some were making a brave attempt to lure forth a hesitant sun. But in the main not many women risked the uncertainties of the weather, and there was precious little to be learned from these sources.

Nothing amazingly new, though much that was impressive, at the great houses of fashion! Nothing to be gained by trailing the belle monde! Well then we might find real interest among that group of newer and younger designers who have recently come to the fore with such force and rapidly as to threaten the stability of the century-old-and-older concerns of which there are really quite a few.

There will be many new names to conjure with as we approach the Grand Openings of the autumn. We for one prophesy that these ambitious creators, while they may not carry off all the palms, will mount near the heights of Olympus, speaking fashion-wise at least.

We are so confident of this that we shall come right out in mentioning their names. Chez Jean Latour made much of afternoon frocks designed on sectional lines and flat crepe was the medium most in evidence here. Also there was much exquisite handwork. But it is the variety of treatment that distinguishes these models from the many other sectional themes conceived. A scarf collar cut in one with the surplice blouse, worn either as a fluttering end or perching in a bow on the left shoulder, was merely a minor, though attractive, detail of a frock of lime green crepe. The skirt arrested our attention, for here the sections were made definite by hand-done openwork. If you took a rectangle and slashed it from corner to corner the long way, you would have one of the four skirt sections with the broadest end attached to the blouse. Then into the missing half were inserted fine pleats and their joining elaborated by the handwork, with the result that fullness and flatness alternated agreeably and produced a novel effect.

Another frock of bright blue crepe satin treated both surfaces in an effective manner, using the flat surface for the frock, the bright for trimming. A kerchief collar of the shiny face allowed two rounded ends to fall to shoulder-blade depth in back, where the first of two "Indian club" motifs was inset. The second was about three inches above the curving bolero line of the blouse.

Sleeves were adorned with chevron stripes, two of them. And novelty of novelties, at what approximates lower thigh depth and just a trifle to the back of the side seams, there is a delightfully flaring bounce, also of the shiny side, which gives the hemline a decided droop.

Insets and pleat spacings, as well as novel godet arrangements, were one of the high lights at chez Jane Paris. Here the diagonal line was less in evidence. On several fetching creations I noticed that the ends of whatever bands or straps were used were curved like the cranes on our pencil when we give it too much wear. Whether these bands are used up and down or across, they rarely taper to a point but are blunted to a flatter curve. For instance, in a very youthful jacket, ensemble of aubergine green, lightweight wool jersey, the collar and lapels were not sharply notched, but softly

rounded. At the hips three bands were applied, pyramided to a gracefully receding line, and rounded. Two bands of unequal length served for a cuff on the sleeve. The skirt utilized pleats and joined them to the yoke in the same curving manner. And the white crepe de Chine blouse had a deep U gilet, softly pleated and very effective.

Fine pleating seems to be a favorite with this house. We have seen it on light-colored collar and cuffs, particularly on dark printed frocks, many of which achieve the requisite softness and flare by having godet insets. Mostly these, too, are stepped up, either with consideration for absolute balance, the highest being in the center, or in regular gradations at one side, and mostly they prefer the rounded joining to the sharper point.

No catalogue of the younger houses, however brief, would be worth much were the name of Norman Hartnell, the young Englishman whose dazzling creations caused such a furor last season, not included. Hartnell has for some time now been creating the costumes of

the London "palace set," but until comparatively recently was not ranked as important in Paris. The acclaim which his rejuvenation of the 1880 theme received made us hopeful that perhaps he would bring other periods to date. Instead of that, this English house has given us things that are delightfully novel, and while not strictly new, are sufficiently different to be diverting. We have in mind one formal frock of yellow flat crepe. Interest was once more centered in the skirt, which contrived to be pointing, dipping, tiered and flaring all at the same time. In other words, it consisted of two similarly cut circular skirts, one about six inches shorter than the other, sharply pointing at the right and turned back upon themselves to give a cascade effect. A four-tiered effect was given the long, molded bodice by slashes into which elliptical insets were carefully worked. Yellow gardenias formed one shoulder support, the other was the familiar lingerie strap.

In another instance black silk lace was posed over white chiffon in a bodice that was long, close fitting and curved well over the hips. To the bodice a two-tiered skirt was joined, making an exceedingly youthful dance dress, ideal for wear all through the summer months.

The Parisian stage, as so often in the past, presents this season a number of lovely types of frocks, an exciting and amusing comedy by Clement Vauteil and La Pouchardiere opened recently at the Palais Royal Theater. In designing the costumes, Melnotte-Simonin offered some charming examples for the debutante both for formal and daytime wear.

There was naught of flapperism (as we know it since the war) noticeable, indeed the illusion of demureness and girlish daintiness remained with us long after the curtain fell.

One frock was fashioned of pink and beige organdie, the latter forming a wide band around the skirt about four inches from the hem and a wide stripe which reached clear to the hem, forming a cross at each side. The skirt was very full, and the molded bodice continued into a short, standaway peplum, also exceedingly full and ripply.

Fashion Looks Upon Neck And Shoulders



With the vogue of low V-neck dress for sports and informal wear, and the fashion of the sun-tanned complexion—whether natural or artificial—the exquisite care of the neck and shoulders becomes of paramount importance to the smart women.

The first essential is cleanliness. Before exposure to the sun apply a spot of soluble cold cream to the face and neck, massaging it in carefully. Work from the base of the neck up toward the ears and along the line of the jaw bone, with an upward movement. The rub up through the center of the chin with

the head thrown back, easily and with out strain. The shoulders and chest should be massaged similarly, always remembering to rub delicately with an upward motion in order to strengthen the muscles and correct their tendency to droop.

After the cream has been worked into the skin—three minutes at the most—scoop up handfuls of water and rinse the face and neck several times. Dry carefully and put on a liberal covering of powder. If you use a sunburn lotion, apply it instead of the powder. Always remove either the powder or the lotion before retiring.

BRIDAL DRESS

Patou makes a white georgette princess wedding gown with six groups of pin tucks running diagonally from the neckline to below the hips where they all flare to give the effect of much fullness below the knees. The sleeves are long and tight.

NEW APRONS

Aprons, curiously, follow the new vogue for skirt fullness. Many a

USE YOUR JEWELRY TO ACCENT DRESS

Wood, Rice and Glass Vie With Precious Stones in Modern Decorations.

Jewelry, so Mr. Noah Webster says, means jewels collectively, or the art of mounting precious stones. Used colloquially the word has come to mean almost anything in the form of bracelets, necklaces, rings or pins. So in our popular conception of jewelry we have gone far from realism in speech. The thought of beautiful gems and the art of mounting them fades with the memory of times when jewels were jewels.

Ornaments or accents to dress that come under the name of costume jewelry are interesting and smart for just what they are and delightful in that they make no pretense. At present they have struck a barbaric note.

Wooden beads dyed in fantastic colors such as those which delighted the childish hearts of the first Americans, the redskins, are in the lead for daytime wear. It is not unlikely that suntan, so much talked about as to have become bromidic to the point of boresomeness, has brought about this Indian style note.

Briefly tabulated, here is a resume of what various well known dressmakers are presenting in modern jewelry.

Louiseboulanger shows, with frocks of mixed tweed or jersey, wooden necklaces and bracelets in the form of strands of tiny wooden beads twisted together. On the dresses she uses buckles of bright colored carved wood, as many as three, one above the other, appearing on one belt.

The popularity of these wooden buckles, many of them of fantastic design, is not confined to this house. At Champecommuna's a most unusual buckle represents a chicken peeping through an oval ring. Suzanne Talbot advocates fastening belts with the assistance of a pirate holding a knife in his teeth, a most bloodthirsty idea for a belt buckle.

For more formal daytime wear glass is popular, that is, just ordinary glass, not real crystal. Very charming bracelets are shown in all colors to match the costumes with which they are worn. They are made after the manner of the old-fashioned jet bracelet strung on elastic.

Suzanne Talbot exploits rings cut from crystal with a bit of carved black enamel, where the stone ordinarily would be set. She also uses crystal chains as shoulder straps and crystal belts on dresses.

Patou wears necklaces of black

fringe interspersed with strands of dull glass beads tipped with tiny black balls.

Chanel continues to feature her well known crystal jewelry. Her most popular evening necklace consists of two rows of contrasting crystals, one red, the other blue. But just to show her versatility she has introduced a new and interesting note in sports jewelry. Rice, formerly considered as the chief ingredient of nursery puddings, is what she uses. Strands of it, in two colors, are twisted into a short necklace which buttons around the neck and is finished in front with a long tassel. Each strand of rice in the tassel is tipped with a tiny glass bead.

Lanvin shows necklaces of brass and silver balls, while Lucien Lelong sets the stamp of his approval on ornaments of filigree silver and rhinestones placed at intervals on fine silver chains.

INDIVIDUAL COLLARS

New frocks and blouses are divided into kinds that suit certain types of women. Those that feature shawl or other collars that rise in

the back should be bought only by women with slender, long necks. Square necks give the appearance of broadness of face. Round necks are best on the very young and pointed necks are the easiest of all to wear.

SIDE TRAIL

Tulle frocks for summer make much of the side trail vogue. One of French blue tulle has a pleated separate left side that trails the floor, sprinkled all-over in crystals. A girle of crystals and an inch banding of them around the low neck are the frock's only decoration.

BAG-COAT SET

Powder blue crepe is quilted in two shades of sports blue to make a three-quarters dark coat and big sports bag.

SIZED LACE

A beautiful navy blue hat with medium all-around brim and crown fitting the head snugly is made of sized lace. It looks exactly like a lace horsehair braid.

THREE LEADERS

IN CHOOSING ANY MECHANICAL APPLIANCE IT IS ALWAYS SAFE TO CHOOSE A LEADER

<p>A Recognized Leader</p> <p>MAYTAG</p> <p>Aluminum Washer</p>		<p>A Recognized Leader</p> <p>SUPER</p> <p>Automatic Oil Heater</p>
--	--	--

Acknowledged Leader

FRIGIDAIRE

Quiet Automatic Refrigerator
Our Business is Dedicated to a Real Service
That is Appreciated

Home Electric Appliance Corp.
749 Main St. South Manchester

THE MANCHESTER TRUST COMPANY

SOUTH MANCHESTER, CONN.



AN INVITATION

The Manchester Trust Company
—and—
The Savings Bank Of Manchester

Invite you to do your banking business with these two growing institutions.

All the facilities and services of a Metropolitan bank are at your service here.

Due to good roads the location of Manchester in relation to all the surrounding communities is ideal.

You will find your business relations with these banks very pleasant.



THE SAVINGS BANK OF MANCHESTER

SOUTH MANCHESTER, CONN.

A POWERFUL DEMONSTRATION OF VALUE GIVING AT

Frardin's

757 Main St. So. Manchester, Conn.

Thursday, Friday, Saturday, June 13, 14, 15.

Summertime Frocks

GAY!	COLORFUL!	YOUTHFUL!
\$4.45	Super Values \$15	2 for \$12.95 For 3 Days Only

These dresses, as cheerful as the summer season, at prices so modest you can't afford to overlook. Models to wear from sun-up to sun-down in all the newest fabrics. Sizes 14 to 52.



Hosiery Special

Chiffon and full fashioned pure silk hose first quality.
\$1.00
All New Shades

Summer Hats

New Straws!
New Felts!
\$1.65 to \$2.65
In large and small headsizes



Spring Coat Clearance

NOW IN PROGRESS

Coats as Low as
\$8.95

In a wide range of prices up to
\$29.95

for coats that sold for \$59.75. Every coat at half price and less.



Mousseline and Jersey For Summer Ensembles

In Paris there are always the larger collections which have survived. They are the development of the ideas which have been proved by the best dressed women. That is, after all, what makes fashion a survival of the fittest. They foretell future evolutions in style. Clothes become versatile with the merging of the seasons. Summer goes out to meet autumn, as it were. This is well illustrated in the waistline and the irregularity of the hemline. If not, just have your dress belted a little higher and do



not wear it short. We would advise using some personal preference in the matter of skirt length. What does an inch or two matter, one way or the other, in the length of a skirt, and why should we take it as a matter of such importance that we write hundreds of words about it. Dressmakers show longer skirts but wear the length that is most becoming to you individually, keeping within the bounds of good taste, of course.

While designers have done many interesting things in creating what are known as mid-season models, there is nothing new as far as cut is concerned. What could there be? No sane person would endeavor to cause an upheaval of fashions in the middle of the season. Rather do they make clothes interesting by a careful choice of materials and new ways of combining them.

Mid-season fashion showings are important because they represent

an economical idea, is carried out by combining a sheer fabric, associated with summer garden parties with a woolen one reminiscent of autumn days on the golf course.

The dress is of mousseline de soie, that delightful filmy starched chiffon, printed in a smashing design of yellow and red garden flowers, dashed here and there with black to give it an accent. The background is beige, that lovely clear gray-beige which never wavers in its assurance. Why should it? Has it not been one of the best shades for the past two seasons? There is, indeed, no other beige quite like it.

What could be lovelier than a frock of this sort, what more apropos of the season? It has many uses. On cool mornings or for a train trip it may be worn with the trim jersey coat, which accompanies it and a small hat of

MERCHANTS HERE APPEAL TO OUT OF TOWN PATRONS

Community Days a Similar Merchandising Event to Merchants Week Held Here During May.

Manchester Merchants now present Community Days as a sequel to the recent Merchants' Week held in May. They will be held June 13, 14 and 15th and will be a town-wide event among the merchants. This is a movement on the part of Manchester's wide-awake stores to interest the suburban trading territory in their stores, for they feel that they have as much to offer as the stores of any neighboring city. Merchants' Week acted as a sort of introduction of Manchester merchants to thousands of persons living in adjacent trading territories through the medium of the eighteen page supplement of the Herald, which was sent to them. It is confidently believed that once people of this region not heretofore accustomed to trading in Manchester have discovered the facilities that these stores have to offer and the many conveniences of trading here, they will make this town their shopping center.

Main Street from the Center to the South end offers a unique business section, and its extremely wide and excellently paved street provides parking space for hundreds of cars. In addition there are large parking areas on the side streets and several large free parking areas provided by some of the larger stores constitute a convenience of the highest importance. Manchester's Main Street is very accessible from all points of the compass. Leading in from East Hartford and Hartford is Center Street, a thoroughly improved highway all the way and from this direction, for people who have no cars, there is excellent trolley service; meeting Main Street at the North, there is a through improved highway from Rockville, making it easy for Rockville people to trade in

Manchester; likewise the roads leading in from Wapping, Windsor and that section of farming territory are now in the improved class. From Bolton, Coventry and adjacent territory there are also the best of highways to Manchester. Good roads also lead into the South end of the town from Glastonbury, and of course there is the new and improved Silver Lane road, with bus service for the people living in the Silver Lane district, so that it is readily seen that Manchester presents a logical shopping center for these surrounding communities. Manchester stores are in a great many cases associated with large buying syndicates or in contact with representatives of buying syndicates which enable them to purchase their merchandise as reasonably as any other store or stores and at the same time get just as much quality for their money as any other buyer or group of buyers. Moreover, due to a lower overhead, they can retail this same merchandise to you at substantial savings compared with the stores in the larger cities.

There is no traffic congestion no matter how many cars there may be in town, as there is room for all. The business houses are concentrated in that section on Main street from the Center to the South end, making it easy for one to get around among all of them and park one's car anywhere up or down the street.

In addition to its fine array of business houses, Manchester also has a first-class theater that is equipped with Movietone and shows all the new pictures just as early as released, so that if you are looking for good entertainment beside a profitable place in which to do your business, we can assure you that you will find it in this theater. This theater also specializes in making itself a cool and comfortable place in summertime through the use of special ventilating equipment.

You will be welcome in Manchester and you will find every merchant prepared to give you fair and courteous treatment and a guarantee of satisfaction with everything they sell.

are tweed coats with bell-shaped, flaring skirts and raglan sleeves.

On daytime suits and coats at Carrette's astrakhan is a popular trimming. A most attractive three-piece ensemble there consisted of a black and yellow wool jersey jumper bordered with black and yellow stripes at the hip and wrists and a flaring black cloth skirt accompanied by a high-belted coat with a standing collar of astrakhan.

Jersey coats for summer are designed on straight lines. This does not mean that the flaring coat has departed. There are many of them in other fabrics, but jersey, a clinging material and made for summer without a lining, lends itself to straight lines.

Topcoats of black wool jersey are smart. Interesting ideas in fur trimming are exploited on these. For instance, one may have a bias trim white goatskin cuffs fastened with links. Completed by a frock of printed tusslkasha, that durable silk of shantung weave, this makes a very smart costume.

Deviating from the straight line

are tweed coats with bell-shaped, flaring skirts and raglan sleeves.

On daytime suits and coats at Carrette's astrakhan is a popular trimming. A most attractive three-piece ensemble there consisted of a black and yellow wool jersey jumper bordered with black and yellow stripes at the hip and wrists and a flaring black cloth skirt accompanied by a high-belted coat with a standing collar of astrakhan.

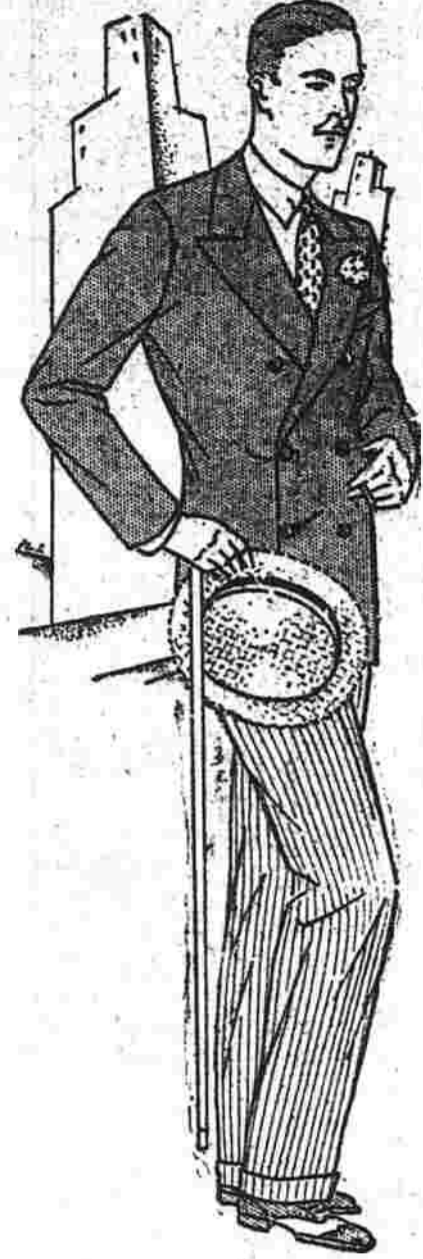
FRESH VEGETABLES.

Practically all fresh vegetables can be reheated perfectly if carefully cooked in the first place. Cook the minimum length of time to soften, then drain and let stand to dry. To reheat, put a little water in a pan and when boiling, put vegetables in and let steam until heated through. Season and one would think they were just newly cooked.

C. E. HOUSE & SON, Inc.

Invites You To Call During
Community Days, June 13-14-15

And Get Acquainted With This
Live-Wire Men's Store



B. KUPPENHEIMER
SUITS
\$40 to \$55
All Hand Tailored

HOUSE'S SPECIAL SUITS
\$22.50 to \$45
In the Latest Shades and Colors

Middishade and Navytone
Blue Serges and Unfinished
Worsted Suits
\$37.50

Two Piece Summer
Suits
\$16.50 to \$30

BOYS' SUITS
Sizes 6 to 18 Years
\$10 to \$25

White Flannel Pants \$8.00 to \$9.00

Work and Dress Pants \$3.50 to \$8.00

Woolen Knickers \$4.50 to \$10.00

White Linen Knickers \$4.50

Khaki Pants \$2.00 to \$3.75

Boys' Woolen Pants \$2.00 to \$4.50

Boys' Khaki Pants \$1.50 to \$2.25

Our suits give service. We stand back of every one we sell. Service and satisfaction are our watchwords.

SHIRT SPECIAL

\$4.50 White Nelvo
Broadcloth Shirts

Soft Collar Attached

\$3.00



Belber Trunks and
Bags for Vacation



SPORT
SWEATERS
\$3.50
to
\$9.00

WRIGHT & DITSON
ATHLETIC GOODS



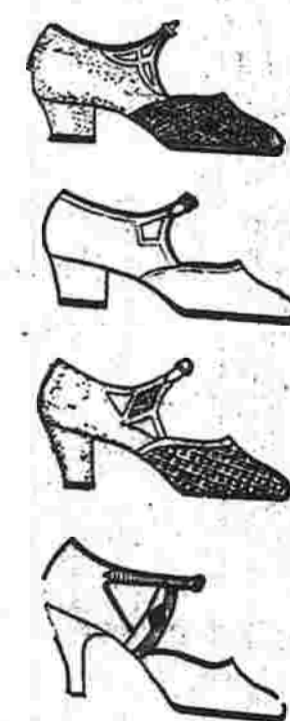
Straw Hats
\$2.50 to \$6.00

Bathing Suits

Men's \$3.00 to \$6.00
Worsted
Boys' \$3.00 to \$4.00
Worsted



SHOE DEPARTMENT VALUES



Shoes --- the Final
Accent of Smartness

With many of the bright-hued frocks of summer, white shoes are often smartest. With others, white shoes with a touch of colorful trimming are effective.

Likewise with sports suits and dresses—the selection of correct shoes determines the smartest of the ensemble.

Our June showing of summer styles provides for every occasion and fashion trend of the season. Blues, Sun-Tans, Glace, Tans, Blacks.



Made by High Quality Shoe Manufacturers in the U. S. A. Red Cross, W. B. Coon Co., Dorothy Dodd, Sally Sweet, Enna Jettick. Prices Range from \$5 to \$12.

MEN—With Summer Clothes— Summer Shoes.

Co-Operative—Selz—Thayer and House's Specials
For Dress or Sports

Personal pride, and regard for your own health should prompt you to have at least two pairs of light-weight summer shoes.

\$5 to \$10

"KEDS" FOR WHOLE FAMILY

C. E. HOUSE & SON, Inc.

THE QUALITY STORE

Special Values At Packard's Pharmacy For Community Days

We have made a storewide inspection of our stock and offer these values to introduce ourselves to those who are not acquainted with this up-to-the-minute store, ready to serve you at all times.

One Tube of Colonial Shaving Cream and one can of Colonial Talcum Powder. Value 75c **50c**

Dr. West's Tooth Brush and one tube Dr. West's Tooth Paste. Value 75c **50c**

One tube Maglac Tooth Paste and one Maglac Tooth Brush Value 75c **50c**

Boraline Mouth Wash, pint bottle **79c**

Antiseptine Mouth Wash bottle **79c**

One 50c tube William's Shaving Cream and one \$1.50 Shaving Brush **\$1.69**

One tube of Shaving Cream and one bottle of Woodbury's Shaving Lotion. Value 90c **59c**

Gem Outfit consisting of one Shaving Brush, one Safety Razor and one package of blades. Value \$2.50 **99c**

Alarm Clocks, all colors **89c**

Universal Thermos Bottles
Pints **89c** | Quarts **\$1.89**

Wearever Hot Water Bottles Regular \$2.00 value **\$1.50**

We have a choice line of Apollo, Durand's, Burbank's and St. Clair Chocolates.

Kemp's Salted Nuts in 1-2 and 1 lb. containers and in bulk.

Guaranteed Hot Water Bottles **75c**

Full line of popular brands of Cigars and Cigarettes

PACKARD'S PHARMACY

AT THE CENTER

Sartorial Sulphur and Molasses

By Edward M. Ruttenber

Lighter-than-air luggage is having its run in the retail marts. I am so assured by a gentleman who handles sales or publicity, or both, for one of our dignified luggage firms. In a recent letter assuring me that I am exceedingly and painfully correct about some things and arrogantly and annoyingly incorrect about others, my informant manages to make out quite a case for luggage styles. I have always argued that there is too much style in luggage and not enough of the practical, a murderous example being the excessively fat kit bag, which crowds a man out of his own sleeping car berth, will not fit under said berth and hamper the shine unmercifully when one locomotes from hitherto yon.

Now we have hangers in handbags, which to my mind do not mean a thing. However, the age of aviation has given us the lighter-than-air luggage and that, to my mind, is important. I do not see why featherweight luggage should be restricted to air travel. My aching arm tells me that featherweight bags with space for the essentials and a few of the luxuries would be agreeable to all men who fit more or less, stand and deliver to Pullman car agents and gasp in air-tight chair and sleeping cars.

Travel reforms begin with luggage and should extend to other matters as we get around to them. There is no doubt that we shall see a great deal of air travel this summer. We shall cast our eyes up instead of down and garner inspiration from the heavens. Husbands will say to their wives: "Adieu, ball and chain. I have a thousand mile trip on my schedule today and may be 15 minutes late for dinner." June honeymooners, defaulting bankers, debtors in full retreat, eloping spouses and others will use air lines instead of the rails. What we really need in this era is light luggage that will linger longer. Excessive burdens belong with the trifles and legends of the maverick decade.

One finds it difficult to classify these participants in American light opera who rush across the stage wearing felt hats pushed up in front instead of down, soft-collared shirts and excessively good clothes carefully pressed. The type represents a compromise between the aggressively athletic type and the staid business man and is rather refreshing. In the spring of the year we encounter a great many chaps geared to the new America note and they turn out to be rather pleasant fellows, taking life with a nonchalant air of easy philosophy. From a men's wear point of view these gentlemen of the ensemble or hurrying crowd represent a new development, a new style source. We all deplore fanaticism and a man can be fanatically athletic or businesslike and one is as bad as the other. We do not admit people who ride their hobby morning, noon and night, whether the hobby happens to be sport or the accumulation of pieces of eight. There can be no bigger nuisance than a fisherman or a golf zealot. But the man who balances matters up gives us a bit of relief and is pleasant company. In Wall street one notices a great many of the semi-athletic gents. They look terribly well scrubbed and some of them wear tiny mustaches waxed to an aggressive point. I refer the matter to Sinclair Lewis, with power to act. He may be able to segregate the message our ruddy friends are trying to put across via a mixture of clothes and mannerisms.

WINNING TO LEISURE THROUGH ELECTRICITY

Being a Story of the Aids the Housewife Finds in Electrical Appliances.

Jane Whitton and I were on the train just twenty minutes ahead of the one her husband habitually took out from the city after business. We had been to a matinee, and I was going home with Jane to dinner. By the divinely unhurried attitude of my hostess I gathered that Jane had recently joined the ranks of that vanishing race which still have servants—and I felt pretty discouraged when we walked into an empty house.

"We'll have to hurry getting our things off," announced Jane, "for Sam will be home in about fifteen minutes and I always have dinner ready for him when he comes." I felt worse and worse, for I was hungry—and one of those little meals that you just slap together in a couple of minutes didn't interest me one bit. However, with as much gaiety as I could muster, I washed the hands and returned to the dining room where Jane was setting the table. My spirits soared when I noticed hot plate protectors, though I suspected I was to be treated to a Parmesides feast.

When we went into the kitchen, Jane opened the door of the range oven and there, reposing happily within, was a roast of pork, a casserole of baked onions, another of pan roasted potatoes and a Brown Betty pudding. I could have cried. I was so pleased and so ashamed of having thought ungentlelike thoughts.

For Jane had acquired a grand new electric range—one of those that have a device whereby you indicate the time the heat is to go on and the time it shall go off, and then walk out of the house and forget all about it.

"I simply can't even begin to tell you what a help this new range is to me," said Jane. "It is almost like having a cook. When I want to go to town or anywhere else for the afternoon, I simply prepare dinner

in the morning, put it into the oven just before I leave the house, set the indicators, and walk out. When I come home everything is perfectly cooked and all I have to do is take the salad out of the refrigerator, open a can of soup and there's a dinner as good as though I had stayed home and worked over it all afternoon.

"It is perfectly all right to leave almost any food in the oven, like that, because if I just put it into the refrigerator for a few hours before I go away, and get it thoroughly chilled, the oven is so perfectly insulated that the food stays cold until the current goes off. And if I should happen to be delayed, the current goes off at the time indicated, and no harm is done.

"What a difference that oven makes in my kitchen! In the old

days I couldn't even think of running the oven except in cold weather and with all the windows open at that, but this new oven has so little effect on the temperature of my kitchen that I can use it in complete comfort on the hottest day in summer. Besides all of which, my dear, there is never any smoke or dirt, which means that my kitchen walls and ceiling stay clean, and even my pots and pans escape getting soiled and sooty on the outside.

"I wish I had time to broil something for you—you see there is no darting flame to shoot forth and ignite the fat, and electrically broiled meats taste better than any others I ever tasted. They are always evenly cooked, and never cause any smoke.

"Let me tell you, if I had realized

how much an electric range would help me, I should have had one long ago!"

That seems to be one of the queer things about an electric range! Women struggle along with antiquated ranges—hating them, realizing their inefficiency, and yet not doing anything about it.

But once they do wake up and demand a modern range to do their cooking on, they are genuinely perplexed as to why on earth they didn't demand—and get!—one long ago. I suppose the trouble is that women just don't realize how wonderful electrical cooking is, that's all. But once they do—watch out, Mr. Husband. Watch out!

There is more than one kind of palm in the average American hotel.

SHOE MEN DISCUSS STYLES FOR FALL

The Style Conference under the auspices of the Allied Industries of Shoe and Leather which packed the main ball room of Hotel Astor, New York, to standing-room-only capacity recently, crystallized in a report indicating only minor deflections from trends previously reported in preceding seasons. While largely devoted to the consideration of women's fashions, the conference allotted considerable thought to what the smartly dressed masculine

foot will wear when the leaves begin to fall and for the first time, as nearly as can be recalled, presented the style findings in company with swatches of representative suiting fabrics and tuning the shoe tones to chime with sock colors.

Fall footwear colors are developed to click with the suit colors for fall: the proportions of which were submitted by the Wool Institute and the Retail Clothiers' Association. This gives gray suitings for fall 41 per cent, browns and tans 33 blue 19, and miscellaneous 2 per cent. An official statement presented by Jesse Adler, chairman of the men's style committee, asserts that the design of fall oxfords will be influenced

by the wide popularity of men's summer sports footwear now worn freely as street shoes. The style committee suggests definitely marked season characteristics in shoe styling so that a change from the summer to the fall type of shoe can be distinguished by such evidences as heavier punchings, perforations and plinkings, sturdier soles and upper leathers.

Spats, the report advises, are increasing in popularity in all grades and are properly worn with both black and tan shoes. Tan shoes, it is set forth, can be correctly worn with grays and blues and miscellaneous shades, but are imperative with tan.

Men's trousers bottoms, the shoe men are advised, will continue to remain at 18 inches. Patterns in suitings for the most part will be subdued, although the color range, in tans and browns will be in rich, live shades. In haberdashery, the report declares, ties and socks will appear in subdued tones but with a decided shot of color. "The tendency toward racier patterns in men's clothing reacts in men's footwear in the matter of narrower toes and trim lines." Is the concluding statement in the report.

The committee finds that the same type of oxfords that were in vogue a year ago will prevail and there is no apparent increase in interest in high shoes.

THURSDAY, FRIDAY AND SATURDAY

ALMOST UNBELIEVABLE!

New Sleeveless Silk

dresses

Specially Priced
At Only



Great
June
Values
Only
At
Silbros

\$7.77
ONLY
77¢ Down
50¢ Weekly

GREAT MEN'S VALUE

SUITS

Rare Value for Men! **\$18.95**

Only 95¢ Down
Only \$1.00 Weekly



Boys' and Girls Wearing Apparel

MEN'S
STRAW HATS
SHIRTS, CAPS
TROUSERS
SWEATERS

LADIES'
MILLINERY
SLIPS
BLOOMERS

HEADQUARTERS N. Y. C.

SILBROS
CLOTHING COMPANY

\$1,000,000
Buying Power

Stores
Throughout
New York,
New Jersey,
Penn.
and
Conn.

Next Door to The Home Bank & Trust Co.
801 MAIN STREET, SOUTH MANCHESTER

WASHABLE
DRESSES
Well fitting, fast colors.
Sizes 16 to 54
At Our Down Stairs
Thrift Store



841 Main St., Park Building

For Real Shopping
Comfort during hot
summer days trade at
this perfectly ventilat-
ed store.

COMMUNITY DAYS

Thursday, Friday, Saturday, June 13, 14, 15

A Well Timed Super Value Event

Smart Summer Frocks

Such marvelous styles! And such variety! Surely every miss or woman will be delighted with these. There are tailored models—others especially suited for Summer daytime wear and numerous modes for smart afternoon occasions.

Materials are flat crepes, georgettes, chiffons Shantung—linen cellanese of fine quality. All effectively trimmed with the most clever of the new season's style touches.



Specially Priced At

\$4.95—\$9.50

\$14.95—\$17.95

FOR COMMUNITY DAYS
VACATION COATS
of Tweed, Broadcloths and basket
weaves. Sizes 14 to 44 **\$14.75**

FOR COMMUNITY DAYS
100 STRAW HATS
Reg. \$3.75 to \$5.95 grades. Includes
fine Toyos and Tubular Straws **\$2.95**

Visit Our Fountain During Community Days

June 13, 14 and 15

and find out about the delicious Ice Cream
Dishes and Cold Drinks we serve.

Always a fresh stock of these superb
lines of Candy.

Whitman's--Apollo

Gobelin

QUINN'S

Cleaning— by Mail

If you can't get to our shop conveniently then use our special mail service. Mail in your garments and they will receive careful and immediate attention and will be mailed back promptly.

\$1 FOR: Women's Plain Cloth Coats
Women's Plain Dresses
Men's Topcoats **\$1**
Men's Suits



TEL. 1419
MODERN
Dyers and Cleaners
11 School St.
South Manchester, Conn.

"Make South Manchester Your Shopping Center"

Your Summer Wardrobe Needs Good Laundering

The extensive use of fine materials has made the laundering of the modern woman's wardrobe a thing apart from the regular weekly wash. The voluminous bulky garments that formerly required back-breaking hours of washing and laborious ironing have been replaced by light scanty garments that wash as easily as a pocket handkerchief and often require no ironing at all. The volume of clothing that formerly went through the routine of wash-day has been greatly reduced. As far as personal garments are concerned, the wash-tub has dwindled to a wash-bowl. Quantity routine washing has given way to more specialized methods and the separate washing of different articles.

When the modern woman washes her stockings, gloves, scarfs, dresses, and the dozen and one lovely eccentrics that make up her wardrobe, her success depends on whether she has adjusted her washing methods to the new type of clothing. If she clings to a hand-mad-down method from the days of the honest-to-goodness petticoat when garments were practically indestructible, she will have reason—if not grounds—to wonder why her silks turn yellow and lose their luster, why the colors dull, streak, or fade, why the threads slip out of place, and why her garments soon become dull and lifeless. Rubbing, hot water, strong soap—mere hardships to the sturdy cottons and linens of former days—are nothing short of atrocities to the finer and more delicate materials of today—unnecessary, too, because the smoothness of the fiber and lightness of the present weaves make dirt removal an easy matter.

By following a few simple rules, the modern wardrobe can be kept immaculately clean, fresh, and attractive with very little labor. Delectator Home Institute is happy to pass on to its readers the methods which have proved most satisfactory in the laundering of fine garments in its own laundry.

A brief outline of the procedure followed is this:

1. Prepare moderately warm suds, with a mild, pure soap—fakes, heads or cake.
2. Squeeze or knead the suds through the garment from three to five minutes.

3. Rinse two or three times in lukewarm water.
4. Squeeze the water from the garment.
5. Roll tightly for a few minutes in a bath towel.
6. If the colors are doubtful, remove from the towel at once and shake, preferably in front of an electric fan, until dry enough to iron.
7. Iron on the wrong side with a moderate iron before the garment has become entirely dry.

To prepare the suds: First dissolve the soap in a small quantity of hot water, then run in cooler water to bring the whole to about 100 degrees F. This is practically the temperature of the hands, but in case of doubt use a thermometer. A moderate temperature is important. One tablespoon of soap flakes per gallon of water is a good proportion if the water is soft. Hard water requires more soap or a little borax or water softener. If the garment is badly soiled that the suds break down, add a little more dissolved soap. Excessive suds are a nuisance, and make rinsing more difficult, but a moderate layer of suds lasting throughout the washing process indicates that the proper amount of soap has been used. With suds of this strength, thorough cleansing is easy. Scanty suds that break down during the washing indicate insufficient soap, and will give poor results—and there is danger of scummy spots.

To wash: Squeeze or knead the suds through the garment. This is a sufficiently vigorous action to remove all ordinary soil in three to five minutes. If the first suds become dark in color, it is well to repeat the washing in fresh suds. In the case of muddy spots or other deeply imbedded dirt, on light-colored silk stockings, additional soap and a little light rubbing between the hands is a help. But as a rule rubbing is unnecessary and should be done lightly and sparingly if at all. It injures the fine surfaces and makes hard work of what should be an easy task.

To rinse: Two rinsings are sufficient if a fairly generous amount of water is used. For fast colors, cold water retards the running of the dye. White silks are improved by an additional lightly

blued rinse after they have become yellow. But if hot water, harsh soap, and direct sunlight are avoided, yellowing can be greatly retarded.

To remove the water: Press or squeeze the water from the garment. Do not twist. Hard twisting strains and often breaks the fine filaments and so makes runs in stockings and other knitted garments. If ironing is not necessary, pull the garment into shape and hang it indoors away from direct sunlight and heat. Do not use clothes-pins on rayon. If ironing is necessary, spread the garment over a large bath towel or an old sheet. Cover with another towel and roll the whole together in a tight bundle. If the color is fast, the garment can remain rolled until most of the moisture has been absorbed by the towel, when it is ready to iron. But if the color is inclined to run, it is best to remove the garment from the towel immediately and shake it, preferably in front of an electric fan, or in a current of air, until it is almost dry. Press it immediately. Streaking seldom occurs in the suds. It occurs almost entirely during the drying. If the drying is hastened, as described, by removing the greater part of the water with towels and then shaking until dry enough to iron, fugitive colors can often be laundered very successfully. The old theory that a fugitive color can be set at home with salt, vinegar or other household means has proved erroneous. The only solution of this problem is to work fast. Have everything ready before starting: two bowls of lukewarm suds, two cold rinses, towels spread out, electric fan going, iron heating. Take plenty of time in the suds to remove the soil and loose dye, and if the first suds become badly discolored, it is well to repeat the washing in the second suds before proceeding to rinse. Then work as rapidly as possible and, unless the color is a fast runner and you a slow worker, your chances of winning are good.

To iron: The degree of moisture necessary for smooth ironing depends largely on the material. Some crepe and knitted weaves in either silk, synthetic fabric or cotton should be ironed perfectly dry. This is particularly true of very elastic crepe weaves that stretch badly when moist. Others require a very slight amount of moisture. The smooth flat weaves in silk, such as broadcloth and radium, require more moisture than crepe weaves. But silks, as a rule, should be pressed when almost dry. Too much moisture, especially when combined with a hot iron, makes them stiff and paper-like. Silks should not be

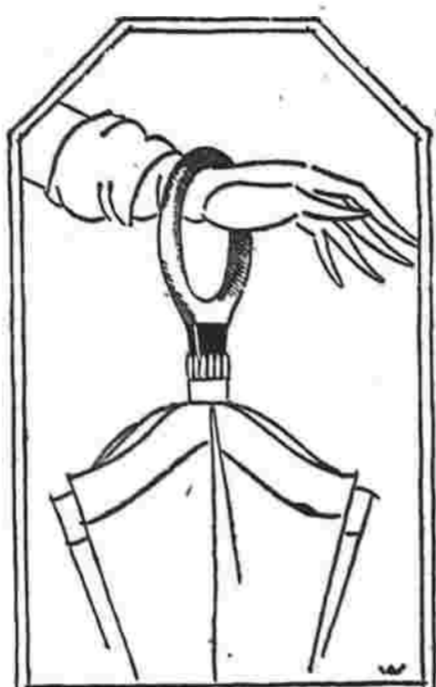
sprinkled. If they have become too dry, the proper amount of moisture can be restored evenly by spreading a slightly moist cheesecloth over them and rolling all together for a short time.

The iron should be only moderately hot—just a little above the temperature when it begins to sizzle, and not be allowed to mount. A temperature that can be used safely on cotton and linen scorches silks and destroys some types of synthetic fabrics. Fortunately there are irons on the market with a temperature control that assures the proper heat—low, moderate or high—for any type of fabric. Other irons which indicate as well as control the temperature suitable for the various fabrics will soon be available.

Pressing for the most part should be on the wrong side of the material. Double thicknesses should be pressed first on the wrong side, then under a cheesecloth on the right side. The strokes of the iron should be directed with the thread of the material either lengthwise or across the material. This is usually determined by the individual weave. As a rule it is best to press first any loose dangling ends, then the sleeves, and finally the main part of the garment, proceeding usually from the top to the bottom.

The radio will never be popular with the political orator who talks with his arms.

Amber Handle



THE HANDLE of this umbrella imported from England is a conveniently large bracelet of amber to slip over the hand easily.

F. T. BLISH HARDWARE CO.

MANCHESTER'S MODERN HARDWARE STORE

WHY YOU MUST SPRAY YOUR FRUITS AND PLANTS

1st—To protect plants and fruit from blight and menacing insects.

2nd—To keep foliage green, which means well matured fruit and flowers.

Do not wait until you are compelled to spray for plants can be destroyed in a day under certain weather conditions.

Our years of experience will guide you as to proper material to use; how and when to use it.

DUSTER GUNS

75c and \$1.25

For Dusting Spray Materials on Plants

SPRAY GUNS AND TANKS

3 Gal. Galvanized Tank Sprayer, \$5.00. Larger Sizes, \$6.00 to \$9.00. Quart Size Sprayers, 65c each and up.

Tomato Plants 35c dozen

Varieties: Earliana, Stone, Bonney Best and Ponderosa.

Pepper Plants 30c dozen

All Varieties

Cabbage Plants 20c dozen

Garden, Grass and Grain Seed

All Tested Varieties.

Fertilizers for Lawn

Market Garden and Flowers

GARDEN TOOLS

All first quality forged steel. (Not Cast Iron)

ARTLAC

A new quick drying Enamel—32 Shades. Anyone Can Brush it on.

GARDEN HOSE

8c, 10c, 12c, 14c and 15c ft.

VICTOR HOSE REELS

\$2.75

Will Hold 100 ft. Hose.

DEVOE'S DERAYCO

HOUSE PAINT

\$2.95 Gallon

JERSEY COPPER SCREEN CLOTH

16 Mesh—All Widths.

Specify Dark, Hard Copper

SCREEN DOORS

\$3.25 to \$5.00

According to Size

Galvanized Screen Cloth

16 Mesh, all widths

Tennis and Baseball Goods

Reach, Wright & Ditson Line.

Coldwell Lawn Mowers

Ball Bearing

\$6.75 to \$12.00

FISHING TACKLE

Silk Lines from 60c to \$1.25. 50 Yard Spools of Very Best Quality

COLEMAN CAMP STOVES

\$6.00 and \$9.00

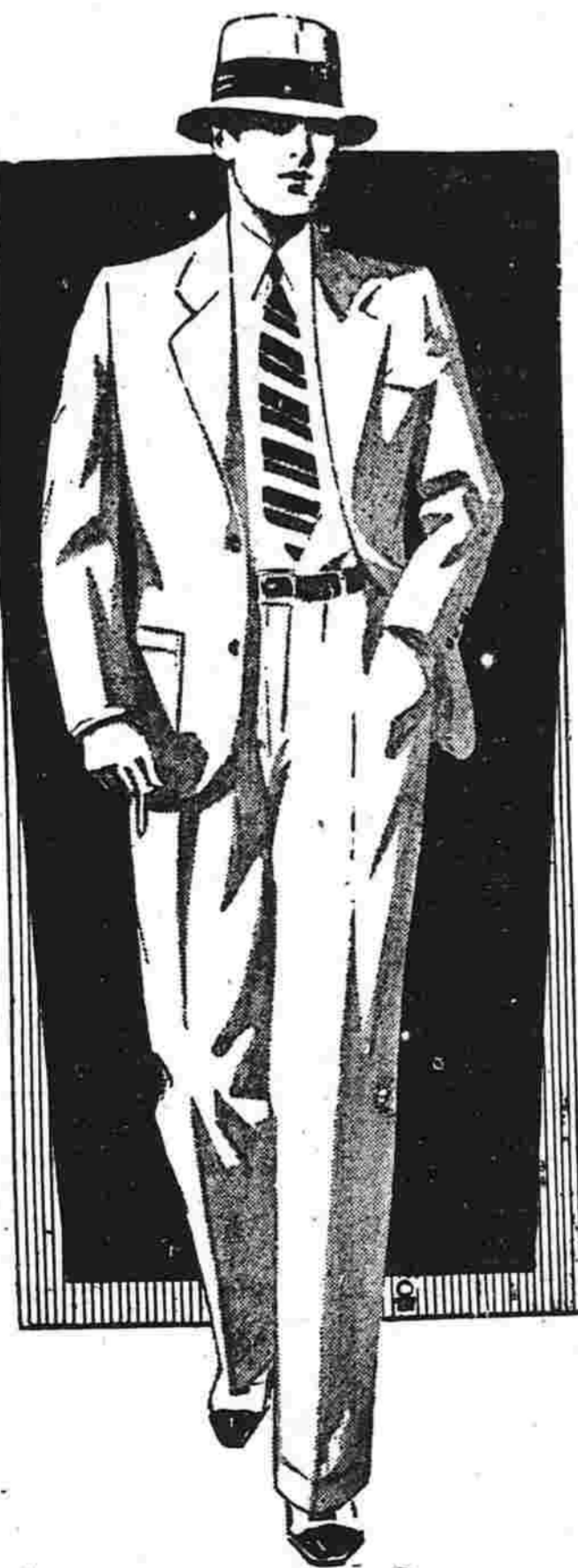
Quality is most foremost in our minds in both purchasing and selling.

Quality Clothes and Furnishings At Reasonable Prices Feature This Store

We feature an extreme line of quality clothing and furnishings for men and young men at as low prices as quality permits. You will find that in the long run it pays to buy quality merchandise.

We Feature "FASHION PARK CLOTHES" For Men!

SEE OUR RANGE OF SUITS FROM \$22.50 to \$49.50



STRAW HATS

\$2.85 to \$7.50

CARTER'S UNDERWEAR

INTERWOVEN HOSIERY

Sulloway Sport Hose

Sport Sweaters and Knickers

Sweet Orr Dress and Work Trousers \$3.00 to \$7.50 Pair

Jantzen's SWIMMING SUITS \$4.00 to \$6.50

Cheney Neckwear \$1.00 to \$2.00

Quality Footwear for Men Who Want Style and Comfort

FLORSHEIM SHOES \$10.00

BOSTONIAN SHOES \$7.00 to \$10.00

"FRIENDLY FIVE" SHOES, A Big Value at \$5

HICKOK BELTS \$1.00 to \$3.00

GLENNEY'S

Modernize Your Rooms With Ease

By LOIS PALMER

To bring a home up to date, it is necessary to discard but little, if any, of our old furniture. The accomplishment lies in making the most of what we already have, with here or there a new background—the walls, or the floor—new hangings perhaps, or slip covers; and, very often, the rearrangement of a room's furnishings. And, happily, it is to make a room more modern is to make it more comfortable.

For modernity in interior decoration goes hand in hand with comfort, these days. By yourself, is the modern homemaker's command, no less to her surroundings than to her associates; and she insists upon having, for example, good-looking chairs that are comfortable enough to be sat in for hours at a stretch, rather than some stiff-backed affair on four legs such as our forebears placed in the parlors of the company use. Chairs, tables, sofas, lamps—each must be thoughtfully designed for its specific purpose, and must be as harmonious a part of the general plan of decoration as the leaf to its plant.

Likewise, the modern homemaker loves light and color, and abhors ugliness, and her fabrics, her hangings, upholstery and floor coverings must be as beautiful as she is able to find.

Though the interiors were decorated for people of means, it is encouraging to know that in this year of grace, 1929, there is no one so humbly situated but what she may, with a little careful planning, furnish her own rooms far more attractive and with greater resulting convenience for their occupants.

And in as much as these rooms are fairly typical of thousands of others which were furnished in the Late Victorian era at less cost, it will undoubtedly help many readers to know just what was done to modernize unattractive interiors.

ROOM ONE—Here was a room in which the misuse of color created an unpleasant glaring contrast between walls and ceiling and woodwork; and where the furniture, most of which looks uncomfortable, was so placed as to repel rather than invite.

Modern decoration has one great advantage over that of the past: As informally everywhere becomes more the vogue, it extends itself even to such inanimate things as furnishings. The result is pleasing; it puts us at our ease, and when we are that way we can really enjoy life.

And, as we all know, the improvement in dyes since those dreary days of stiffness and formality is almost unbelievable—our cretonnes, chintzes, rugs and carpets and wall coverings and all other materials are so colorful as almost create the illusion of light, "like clear shining rain" in comparison.

And so color was the first consideration. Instead of the dark brown paper, once in soft green of an indistinct pattern, was put on the walls. Then green paint was procured of almost the same tone as the green of the paper, and white paint mixed with it until a soft, paler green was secured for the ceiling, the walls above the molding and the woodwork. It was possible to use green here, because the room is very bright and light, due to having many windows; it was desirable to use green, because it is such a restful color, less tiring and therefore more suitable for a living room than hard, dark brown.

The second touch of modernity came in the hangings: these windows, reaching almost to the ceiling from the floor, could, like a tall woman, afford to have their height with stripes. And so a thin material, cotton, with stripes of bright yellow running across it, was chosen to replace the conventional and uninteresting dotted-marquisette curtains. And how much gayer and swifter they made the room look! They were pushed well back, wide bands of plain yellow being used merely to keep them from blowing out.

Those two changes were almost enough; but the chairs were so uncomfortable, they had to be replaced by—

A wing-back, covered with gray-green jasper toile.

A broad-seated armchair, in yellow-striped linen.

A side chair, painted to match the green of the walls, and its pad covered with the yellow-striped linen.

Next came the rearrangement of the furniture: The small reading table, with its chair, took the place of the queer old chair near the end window—in the light, where one could really see to read. The new side chair was placed beside the table between the two windows, where it would be of passage.

A new armchair was placed close to the davenport—at a right angle to it and facing the bookcase—the cane-seated chair and the two others being removed altogether.

With the addition of floor and bridge lamps and colorful new covers on the cushions—the yellow-striped linen and some plain green material—quite a transformation was effected, yet without any considerable outlay. The rug and most of the furniture being retained and fitting in nicely with the chosen expressions of modernity. Needless to say, the three chairs need not have been bought at one time if the budget made it especially desirable.

ROOM TWO—An attic bedroom was always fun to do over, because, somehow, it seems so cozy and friendly—if you will let it. In this one the striped paper was taken off and new paper put on. It is a delicate shading of green, with shell pink and touches of bluish rose, yellow and gold, and the pattern gives the effect of tiny timid suns peeping out from behind their shelter, scattering a few rays here and there. The ceiling, too, was covered with

HONORS ARE EVEN BETWEEN FRUITS, FRESH OR CANNED

In the midst of a fruit-rich country, cans of fruit are no incongruity, no carrying of coals to Newcastle, provided, of course, a high quality of canned fruit is selected. This means a product in which one can count on "honesty in the can"—backed by a canner of national reputation as to the fine quality of fruit, richness of syrup, and high standards of packing of the goods sold under his brand. Both canned and fresh fruit have their own places in the market and menu scheme of the consumer.

Fresh fruit, yes, while the season is on—abundance, it carries the crispness and freshness and naturalness of growing things. But for canned fruit there is no closed season. Moreover, there is no difficulty in transportation and merchandising, no chance of unripeness, no danger of waste, no need of haste to use before spoiling.

Canned fruit brings products that are rare or from distant orchards or not locally in season—grown to the full ripeness in their sun-blessed native habitats.

In the midst of summer, then, with the markets and orchards overflowing with fresh fruit, the wise housewife will keep her larder well stocked with those in cans. For, in summer, the menu with many fruit dishes is the popular and the right one.

To dress the simple dish effectively, we can always rely upon fruit. Canned or fresh, there is an infinite variety and an endless number of combinations to lend a master's touch. For egg dishes, such as an omelet or scrambled eggs, scramble with the eggs for example, one or two tablespoons of orange marmalade, of currant jam, some green gage or purple plum, any fruit or jam or marmalade that has a distinctive flavor adds much interest here. So with an omelet. Fold in the sweet when the omelet is ready to turn. Garnish with fruit. A suggestion here is to use preserved figs. Open the figs and stuff them with spiced jam or a few bits of chutney. Put each fig on a slice of tomato and garnish the egg dish. Or combine the figs with sections of orange and lemon. It is delicious.

Fruit fritters, for instance, always add a note of difference to the meal. They are not hard to make, and the variety is appealing. Served with a main course or by themselves, as entree or dessert, they are good and equally appropriate. Apples, pears, peaches, apricots, bananas, pineapple, orange—all in fritters served with powdered sugar or with a fruit sauce. Italian batter is best for fruits, and is made by adding brandy flavoring to the regular recipe. Remember that in using very juicy fruit such as oranges, the batter must not be thinned out quite so much as for less succulent fruit. Canned peaches make delicious fritters, as well as being indispensable in Peas, Melba and other creams. They are particularly good marinated in syrup in which a little ginger syrup has been mixed. In making fritters the canned fruits need only to be drained well before using. We cook the

syrup from the can with a tablespoon of sugar and a little lemon, thicken with one teaspoon of cornstarch, cool slightly, color (sometimes) with a vegetable coloring and use it as a fritter sauce. Worth doing, this.

Bananas are always with us, and being inexpensive and rich in nourishment, liked by almost every one and ready to be converted to any number of uses, deserve honorable mention among fruits. Bananas, slightly sugared, lightly dredged with flour, fried in butter very slowly and served with lemon sauce, are excellent with ham, steak or game. Baked in an orange sauce, or juice of canned fruits such as pineapple and apricot, they may be used for a simple dessert or as a vegetable. Make the sauce of any desired juice, either fresh or canned, adding half a cup of sugar to one cup of fresh juice and cooking five or six minutes. Lemon juice alone needs one-quarter more of sugar. When cooked, add a few drops of lime juice or almond, or cook a stick of cinnamon in the syrup. Pour over the halved bananas and bake slowly for twenty minutes. Serve hot in the syrup.

In the south one always finds the marvelous fruit syrups and "granites," the universal summer delights which lessen the burden and heat of the day. For summer, in summer, say what you will about it!

A granite is a half frozen syrup, "frosting," always liquid enough to pour, but so cold that it just misses being a sherbet. All canned and most fresh fruits are available. To make a raspberry granite, cover a quart of raspberries with one pound of sugar. Mash and set aside for two or three hours. Extract all the juice, straining. Add two tablespoons of raspberry extract. Add a pint of water and freeze until the mixture looks white with frost. Serve in tall, thin glasses, topped with a little mint or a crystallized raspberry. Use oranges, lemons, strawberries, loganberries, pineapple—any of the fruit—also your sweets will indeed be appreciative.

In granites the canned fruits and juices may be used—grapefruit, raspberries, strawberries, apricots, pineapple—draining the juices after cooking down with a little sugar to the syrup stage. With a thin syrup more sugar must be added, with about ten minutes of cooking. The idea is to get the heavy syrup, then combine with water, as for fresh fruit.

Strawberries are so delicate and perfect that we think they deserve to occupy a special niche, and so we serve them beautifully clean and cool, their green stems on, with a mound of powdered sugar to dip each berry in as it is eaten. The merits of strawberry shortcake are known to all. But a strawberry cream so marvelous that it has no comparison is made by crushing the berries and putting one quart of them and two cups of sugar through a coarse colander, adding them to one quart of cream and a pint of milk and freezing. The berries should have no white centers or hard pieces when used, so, but the colander allows only the right berry texture to go through, and gives all the color and flavor.

The melon is a daughter of the sun. It is a glory of fruit. Chilled and superior on a bed of ice, in globules of cool crystals, it refreshes the tired palate; it is at once an appetizer and a dessert, of delightful flavor and goodness.

Canned grapefruit, well chilled, may be had and used when fresh

fruits are out of season, hard to get and expensive. For all uses where grapefruit is wanted, it is excellent, and it does not suffer in flavor from being canned. The canned grapefruit juice, too, answers the question of fruit juice very adequately. Every fruit, in every form, is good as a dessert in itself. Fruits yield a surprise element to an otherwise obvious thing. They bear up under endless combining, they support and complement one another. The unobtrusive flavors of several fruits blend into an indefinable flavor that attracts, and not only attracts but satisfies as well.

The president's pocket veto has been held legal. That means there will be a lot of legislation for Mrs. Hoover to read, if she's like lots of wives.

Of course it was perfectly all right for Colonel Lindbergh to get married, but he certainly did disappoint about 10,000,000 loyal constituents.

CREAMED POTATOES.
A delicious luncheon dish is made of grilled tomatoes on toast slices, covered with a thick cream sauce flavored richly with cheese.

Of course it was perfectly all right for Colonel Lindbergh to get married, but he certainly did disappoint about 10,000,000 loyal constituents.

"A Bank Of Service" In Name And Deed

We have always taken pride in the matter of service we render our customers. That it has proven to be a real service, is shown by the increasing number of new customers each month.

If you are planning a change in your banking connections we invite you to come here. We shall be pleased to see you and welcome you.

THE HOME BANK and TRUST CO.

The Bank of Service

IT PAYS To Buy Merchandise Of Merit

Below you will find listed a few of the many nationally known lines of merchandise which we carry. You will find a complete stock of these lines at all times, priced right, of course.

- Millers Falls Tools
- Stanley Tools
- Buck Bros. Chisels
- Russell & Jennings Bits
- Yale & Towne Builders' Hardware
- Sherwin-Williams Paints
- Greenfield Tap & Die Tools
- Bright Star Flashlights and Batteries
- Spalding and Narragansett Sporting Goods
- SOUTH BEND FISHING TACKLE
- 1900 WASHING MACHINES
- ELECTROLUX GAS REFRIGERATORS

I'm Satisfied it's a BLAIR

Ask the man who owns a Blair lawn mower what he thinks of it. He will tell you it is the best machine he has ever used.

In design, material and workmanship Blair lawn mowers—like most New England products—are built for service.

The green Blair label (on the handle) is your guarantee of quality. It will pay you to look for it when buying the new lawn mower.

Blair Manufacturing Co. Established 1879 SPRINGFIELD, MASS.

Sold by leading dealers everywhere

BLAIR LAWN MOWERS

THURS., FRI., SAT., ONLY.

SPECIALS WASH GOODS SALE

We have reduced the prices on most of our wash goods for these three days only. Exceptional savings at the beginning of the season.

1/2 PRICE TABLE

Here you will find a wide selection of odds and ends from our entire stock at 1-2 price.

NEW PERCALES 19c yard
Good Quality, New Patterns

Special Sale SASH CURTAINS

Values to 69c. White, Cream and beige 49c pr.

10% Off On All CURTAINS
Over \$1.00 Pair, During This Sale

One lot curtains consisting of colored cottage sets, white and cream ruffled, white, cream and beige flat curtains and nets in odd pairs. Worth to \$4.00 Pr. \$1 pr.

Silk Rayon Bed Spreads 81x105 all colors. 3 days only \$2.69 ea.

"GROWING ON VALUE"

THE TEXTILE STORE

849 Main St. South Manchester

Manchester Plumbing & Supply Co.

"If It's Hardware We Have It." Phone 459. Make South Manchester Your Shopping Center.

POKE BONNET, TRIMMED IN FLOWERS, RETURNS

Velvets Also Used for Trimming Materials; Purses and Parasols Animate Summer Styles.

In the days when women, young and old, wore poke bonnets one of their main ambitions in life was to look pretty. Their happiness more or less depended on this. Lovely faces were coquettishly shaded just as other charms were suggested rather than revealed.

With the coming of longer skirts, from which ankles, pretty or otherwise, peep, comes the revival of the hat styles of a bygone day. The silhouette of the moment just had to be fittingly crowned. Hence the return of the modified poke bonnet. Newest among this summer's hats are those of the bonnet type. Brims are cut off at the back.

Women did not take kindly to the hats with deep brims coming over their shoulders that milliners offered this spring. The line was not flattering, neither was it comfortable to have a hat brim scratching the back of one's neck. Furthermore, hats with their brims cut straight off across the front are unbecoming, except to great beauties. As these seem to be in the minority it is well that something else has been provided to flatter the rest of us and to tempt us to extravagance in headgear.

Medium-sized hats have brims fairly short in the front, long at the sides and cut off to nothing at the back. Flowers and velvet are the newest trimmings, both these style notes are combined in velvet flowers, which are among the most distinguished of trimmings.

Flowers are used in a variety of ways. The back of the hat may be banked with them, they may be across the front of the brim or a few blossoms may be tucked beneath it on one side in the fashion that the glowing Spanish senorita has made everlasting.

Small toques are shown to wear with suits or for traveling. Turbans of knitted or crocheted straw in colors to match suits still are worn. These are cut to reveal the forehead and fit closely in the back. Tiny bunches of feathers or stiff little quills trim them.

Reboux uses quill motifs in black and white to punctuate her turbans. Question marks and commas are her favorites. She places them directly over the right ear. A nose veil, edged with fine straw, is another smart touch to the Reboux turban.

Handbags are as diverse as the shoes they match. It still is smart to have one's purse and shoes correspond.

Perugia's newest shoes show multi-color leathers combined in one model. And for every shoe, walking pump or evening slipper there is a matching bag. Pink and blue kid are used to

trim an ochre-colored slipper. The trimming bands are treated as if they were soft ribbons strapped across the toe. The same idea is carried out on evening slippers of black or gold-colored kid with appliqued designs in three colors of pastel colored leather.

White opera pumps have designs at the sides in beige and pale pink suede. When an ankle strap is considered advisable it is covered with a pleated leather motif.

Perugia's newest strapped shoes for daytime wear are made of dyed

Panama straw, trimmed around the toe, heel and ankle strap with metallized pastel colored leather.

Umbrella and parasol designers have been as busy as dressmakers in thinking up new ways of encouraging us to clear out the umbrella closet and stock it anew.

Chintzes and silks in the gayest of patterns cover the new sunshades. Handles are long, very long. The parasols which they support are so tiny as to be little more than a decorative topping to the costume.

NECKWEAR FOR WARMER WEATHER

Ranges from Flat Furs to the Sheerest Media—Silk Scarfs Are Popular.

Why in the world do women wear furs in the summer time, that half of our population which is male has in seasons gone by hurled at us again and again? Knowing that there were no sane reasons, we were tongue-tied in the face of the unde-

nably hot-looking furs we encountered, the foxes, lynx and even the medium long furs which we secretly felt should have made friends with the moth balls long since.

But this year is remarkable in that no long-haired furs will have a chance a prolong their existence in the face of the delightful scarfs that are made of kidskin and galyak and ermine shorn so close to the skin that they have little more nap or depth than a bit of fine velvet. One such scarf which would be stunning now with a suit was of gray kid in ombre effect, toning

from pearl to black in diagonal stripes of even width. The long tapering ends were pleated into a much narrower section that encircled the throat. The ends could be worn, one down the front, one thrown back over the shoulder or both back over the shoulder, which was most effective.

The summer ermine scarf illustrated above gives the fortunate possessor opportunity to display her own ingenuity. The two ways of wearing it are distinctive enough, but we have seen it worn with the long end thrown over the shoulder

in back so that the loop stuck out more pretily and gave the quite ordinary suit a most distinctive chic.

Silk scarfs, because of the rational senseness behind them, are going to be very popular. You will see them at mountain resorts where cool nights invite them. They are going to the beaches where capricious breezes make them most welcome.

While floral patterns are by no means obsolete, we find the majority endorse fairly bold geometric or striped motifs wherein two or three colors strive for dominance on back-

grounds that are frequently of off-white, light yellow, tan, beige, pale green or grayed tones.

Great popularity is foreseen for the knitted scarfs and when other complementary accessories are available in the same medium and design, our problems are reduced to such an appreciable extent that each of us will want to own a scarf ensemble.

The difference between a fool and an idiot is the fool can help it, but won't.

When The Bride To Be Chooses
FLOWERS



Naturally she wants the finest blossoms obtainable, arranged in exquisite bouquets and lovely decoration—for now is her long cherished dream come true.

Our service is hers to command, whether for elaborate church affair or modest home wedding. We are equipped to render wedding flower service uncommonly well.

We will gladly call to help you with your plans and to furnish estimates.

FLOWERS BY WIRE, ANYWHERE, ANYTIME.

Park Hill
FLOWER SHOP
Leading Florists

913 Main St.

Next to Hultman's

ARTHUR L. HULTMAN
917 MAIN STREET
SOUTH MANCHESTER

THE MOST COMPLETE OUTFITTER FOR

Men and Boys in This Community

Nationally known lines of Clothing, Furnishings, Shoes and Hats both for Dress Up and Work Wear.

We cordially invite parents to visit our

Children's Department

You will be surprised to find the varied assortment of wearables for the boy and shoes for the "Modern Miss."

We specialize in shoe fitting, taking special care in fitting the feet of the growing child.

Orthopedic Specialist In Charge of Shoes

**ACT NOW TO GET YOUR
Electric Range On \$30.00 Reduction Offer
Your Choice of These Models and Many More**



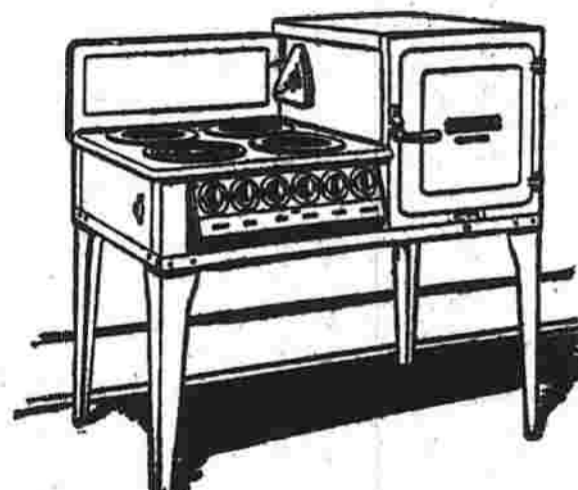
No. 1923 black enamel finish with nickel plated trim, automatic oven temperature control, with pilot light indicator, rust resisting oven lining, two open and one enclosed interchangeable hot plates, connected for automatic oven timer which may be installed at any time.

SPECIAL PRICE FOR JUNE ONLY \$92.75

Installed

JUNE ONLY

Place your order in now, as this campaign is very short. Less than 100 ranges left so act quickly.



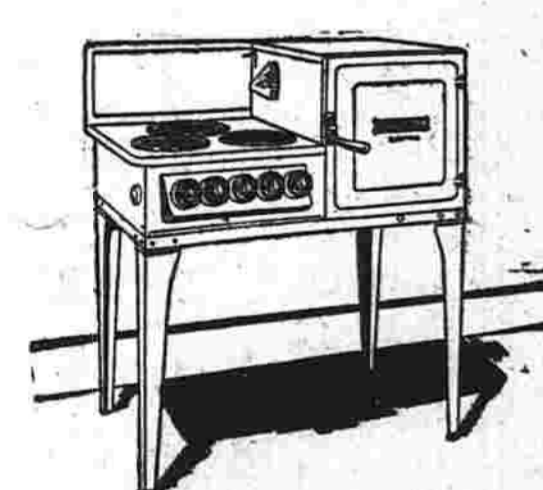
No. 954 full porcelain enamel finish with white French grey trim, automatic temperature control, pilot light oven temperature indicator, refrigerator type oven door, novel metal oven lining, open and closed units interchangeable.

SPECIAL PRICE FOR JUNE ONLY \$139.67

Installed

SPECIAL BUDGET PRICES

Besides the special cash prices we are offering low budget prices, 24 months to pay instead of 12 months.



No. 2593 white and grey porcelain enamel finish with nickel trim, automatic oven temperature control with pilot light indicator, rust resisting oven lining, two open and one enclosed interchangeable hot plates, connected for automatic oven timer which may be installed at any time.

SPECIAL PRICE FOR JUNE ONLY \$105.00

Installed

OUR CUSTOMERS ONLY

All customers are eligible to purchase ranges at these low prices who are not on any new line extension.



The Manchester Electric Company

773 Main St.

So. Manchester, Conn.

Phone 1700



When Costumes Were Costumes

SEVEN PICTURES SHOW CHANGES IN THEATRICAL GARB SINCE 1815



The habiliments of the Broadway stage favorite have changed mightily since New York first went in for theaters in a big way—and Evelyn Brent, popular movie star, shows here what the changes have been like. Photo No. 1 shows her as an actress of the year 1815. In No. 2 she has

moved up to the Romance period, just before the Civil War. No. 3 shows her dressed in the theatrical styles of 1870, when Lotta Crabtree was the belle of Broadway, and bustles were in high favor. In No. 4 Miss Brent portrays a costume that shocked and thrilled the New York of the 90's—the first time that actresses appeared on the stage

wearing tights. The costume shown in No. 5 is one worn by the original Floradoras, about 1901. No. 6 shows a costume similar to the one worn by Fritzi Scheff in 1908—it was considered pretty waring, in those days. And, last of all, No. 7 shows the syncopating, jazz-mad chorus girl of the theater of 1929.

garden are scale, red spider, mealy bug, white fly, aphids and some sorts of beetles and caterpillars. Now we are getting more leaf hoppers each season, presenting another serious problem: They can run or jump in any direction and are hard to hit. Scale, mealy bug and aphids are treated by contact insecticides, thorough and frequent applications

being the key to success. Red spider is kept down by frequent hosing of spraying of plants and is successfully fought by using a preparation which coats the leaves well, such as Volck. White fly in the greenhouse is easily treated by fumigation, out in the garden it is a difficult insect to get at. A fine spray, copiously and frequently applied, will help.

FRONT TAPE

Little girls' bloomers and skirts that are pleated all around should have a little tape sewed right in the middle of the front so the children will know at a glance which way to put them on. This is a real time-saver, and if a loop is made of the tape, the garments may be hung up by it when laundered.

GARDEN INSECTS SPUR CHEMISTS TO NEW EFFORTS

Backyard Campaign Expected to Give Farmer Hints in Fighting Off Pests.

BY THE GARDENER

The public is occasionally aroused by reports of some quarantine being placed by our government on a farming or fruit-growing section on account of some serious insect pest, such as the Mediterranean fruit-fly quarantine of Florida. The small white maggots of this fly are hatched in fruits of tropical countries, citrus fruits especially, and the serious concern of the authorities over this insect may be understood after reading of the appropriations for combating it and the precautions taken by regions contiguous to the infested area. The person with his yard bordered by flowers and the more advanced gardener with considerable leisure both have their troubles with insect pests which seem as serious to them.

Insects affecting garden plants are of two kinds, those that bite or chew and those that merely suck the juices from the plant. Recollections of the old home bring to mind Paris green. This was one of the first insecticides used and is typical of the ones used for the biting insects, including the beetles and the caterpillars. These chemicals have some poisonous principle in them, and while effective against pests which get the stuff into their stomachs, are not useful against the sucking insects. Arsenate of lead is a more modern poison. The insecticides used against the sucking insects are called contact insecticides, their effectiveness due to smothering or absorption. Whale-oil and other emulsions, tobacco extracts, and miscible oils are used for these purposes.

Chemists Combat Insects
One of the most outstanding advances made by chemists has been along the line of insecticides. They are making rapid researches in laboratories in collaboration with field tests, since the creatures which infest the suburban backyard may give light on the more extensive problems of the farmer.

There are many pests over the span of the year to annoy the planter. His losses are very serious to him, because of the restrictions on space, or to the small number of any one kind he may have, or to the limited time he can allow himself for garden work. One rare variety lost to him for a season through ravages of some insect greatly upsets his peace of mind, and touches his pride as a successful gardener.

What are some of the pests which are now threatening the garden plants? When the aster plants are set out the aster root louse may be working. If so tobacco dust should be mixed around the base of the plants. Later, when the gorgeous blooms appear, one of the most hateful enemies of color in the aster bed may appear. That is the aster beetle, a long, large, gray and black insect with strong black wings and insatiable appetite for the flowers themselves. Arsenate of lead should be sprayed on before the flowers are opened, and again later, and picking, if thoroughly done, would keep the plants clean. Tomato Worm Formidable
A very formidable thing is the

tomato worm, which attacks the flowering tobacco and plants of the same family. Although of great size as forms go, it is not readily noticed because its color, very closely approximates that of the plants. Picking off and killing is the quickest and surest method of eradication, until such time as a parasite which gets at the worm can do its work. To the gardener interested in such phenomena here is a case of a parasitism which is favorable to him and one which he can observe easily if he can let the creature feed on his plants without immediate dispatching it.

Boxwood leaves may be discolored and mined out by an insect called the leaf miner. Watch for the adults during the summer. They can be seen flying in a mass just above

the bush; spray them thoroughly with a good soap solution or one of the standard contact sprays. This insect is one of the very few which can be expected to wait around long enough to be killed. If the leaf hoppers and such could be as effectively reached a great help to the pathologist in his attack on the virus diseases of plants would result.

Another pest liable to appear again and again during the summer is a black plant louse or aphids on the nasturtiums. Just under the flower or beneath the leaf close to and on the leafstalk will be found ever-increasing masses of these sucking insects. An application of soap suds if used often and thoroughly will do away with them, but tobacco dust or a nicotine-sulphate

solution are more effective. The under side of all leaves must be reached.

The roses are first visited by aphids or plant lice. The climbing sorts are liable to show this attack early, and also some of the beautiful hybrid tea roses. The aphids will be found around the buds, on the under surface of the leaf and on very young growth. There are so many places on a rose bush that they like to lodge in that it is imperative that every possible hiding place should be reached with spray. "Blackleaf 40", with soap added, will take care of them.

Then comes the rosebug, a voracious virile and tough beetle. This enemy comes with the rose blooms and is found eating the flowers usually as near the heart of the

bloom as possible. Sprays do not seem to reach there and most of the beetles are missed. The way to treat them is to get at every single one of them by hand and then to burn or place them in kerosene. Last season slender green caterpillars attacked rosebuds from the outside and ate some of the tender foliage. These are not serious where arsenate of lead has been sprayed or dusted.

Borers are exasperating to the gardener. As an example the dahlia borer may be cited. A hooked wire is the best weapon of offense and the borer is to be hooked out of his tunnel. Borers in young peach trees or in flowering peaches and almonds are now successfully combated by placing paradichlorobenzene under the soil at the base of the tree.

Insects to be expected in every

MAKE YOUR SUMMER DAYS BRIGHTER AND GAYER WITH ONE OF THESE

PORTABLE PHONOGRAPHS

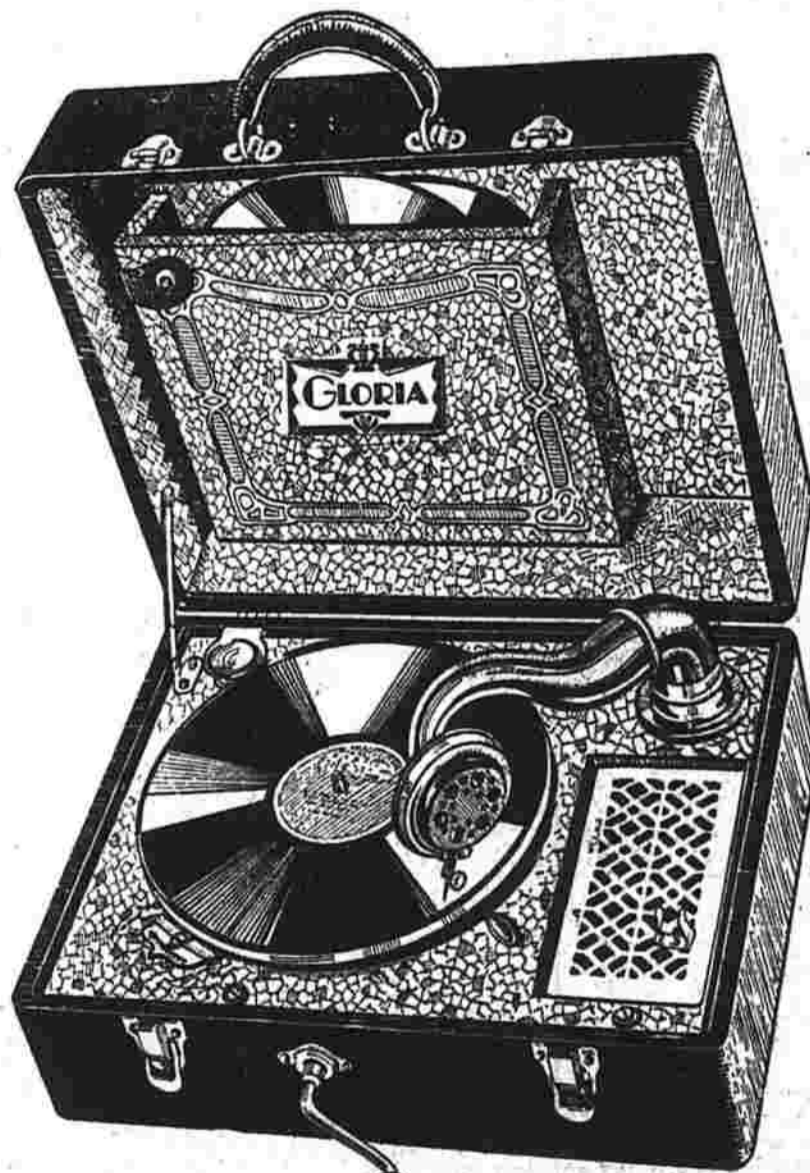
A GUARANTEED HIGH GRADE MUSIC BOX THAT WILL BE A WELCOME ADDITION TO ANY HOME

At The Startling Low Price Of

On Our Famous Charge Account Plan of

\$ 11.95

For the Home, Indoors, Outdoors, Automobiles, Canoeists, Campers, Picnickers



95c DOWN \$1.00 A WEEK

Again DUNHILL'S are offering the people of this city a value beyond comparison. Excellent tone quality. Orthophonic-type reproducer. Sturdy construction. Heavy nickel-plated hardware. Record compartment will hold 10 to 12 records. Motor guaranteed. Can be carried anywhere.

SPECIALY PRICED FOR THURSDAY AND FRIDAY ONLY.

20 WEEK PAYMENT PLAN
DUNHILL'S
691 Main St., Johnson Block, South Manchester

FOR COMMUNITY DAYS

JUNE 13-14-15

MARLOW'S DEPARTMENT STORE

Offer wonderful bargains on good quality merchandise. Below are a few items to give you an idea of the savings to be made—hundreds more on display for easy selection.

- Linen Scarfs With Lace Edges 25c
- Silk and Wool Sweaters in Lovely Shades of Green, Blue, Tan and Red 1.00
- Sleeveless Dresses of Dimities and Prints 87c
- Children's Waist Union Suits 29c
- White Turkish Towels, Large Size and Heavy Weight 25c
- Good Quality Seamless Sheets 84c
- Ruffled Curtains 79c
- Rayon Underwear Divided in Two Large Groups—Vests, Bloomers, Step-ins, Panties, Briefs, Gowns—Good Quality Garments, Lace Trimmed or Plain Tailored in All the Pastel Shades . . . 55c, 79c
- Boys' Washable Suits Reduced.
- Boys' and Girls' Coveralls 79c
- Girls' Dresses Reduced.
- Men's Broadcloth Shirts 88c
- Men's Balbriggan Shirts and Drawers, 39c
- Men's Fancy Hose 19c, 29c, 39c
- Children's Rayon Combination and Slips 79c
- Big Yank Work Shirts, all Colors 79c
- Ladies' Silk Hosiery Reduced to 39c, 79c, 1.27
- Sutrite Hosiery—Perfect 1.54
- Padded Ironing Boards 1.98
- Dust Mops 39c
- Large Size Cocoa Door Mats 1.00
- Table Oilcloth, 1 1-4 yds. Wide 25c yd.
- Shelf Oilcloth 5c yd.
- Galvanized Garbage Cans, Large Size, 1.00
- Mixing Bowls, Nest of 6 89c
- Serving Trays 59c
- White Cups and Saucers 10c set
- Decorated Cups and Saucers 20c set
- Assortment of White Enamelware Consisting of Water Kettles, Dish Pans, Pails, Double Boilers, Sauce Pan Sets, Coffee Pots and Cooking Pots, Choice 69c
- 10 Per Cent Discount on Breakfast Sets, Cereal Sets, Dinner Sets, Silverware, Rugs, 10 Per Cent Off.
- Assortment of Aluminum Including Double Boilers, Percolators, Collenders, French Friers and Pots 59c
- Willow Clothes Baskets 1.00
- Bath Sprays 49c
- Guaranteed Alarm Clocks 74c
- Suit Cases, Hat Boxes and Hand Bags, 89c
- Lustre, 23 pc. Tea Sets 2.98
- Outing Jugs, 1 Gal. Capacity 1.00
- Thermos Bottles, 1 Pint Capacity 79c

COME TO

MARLOW'S FOR VALUES

MAKE SOUTH MANCHESTER YOUR SHOPPING CENTER

In Connection With

COMMUNITY DAYS

JUNE 13, 14 AND 15

We Invite You to Call and See Our Line of Wall Paper and Paint and Make Plans for the

Redecorating And Modernizing Of Your Home

WALLPAPER

We carry an extensive line of high grade papers. Our turnover of stock is so large that you are always assured of fresh, new stock. We take great care in selecting our stock with the idea of having a large assortment of patterns that will please our customers.

PAINT

We sell and use only the best grades of paint and varnish. It is the only kind that will insure a lasting and satisfactory job. If you are doing work at home call in and let us supply you with good materials.

OUR WORKMEN

If you want us to do your work we can assure you that we have a competent force of men who are thoroughly experienced and who are neat and efficient and will leave your house in the same perfect order in which they find it.

JOHN I. OLSON

Painting and Decorating Contractor
699 Main St., South Manchester



PORCH UPHOLSTERY MUST DEFY THE SUN

Non-Fading and Waterproof Materials in Attractive Patterns Being Used.

By MARGARET FLEMING
The flapper meets the challenge of the sun by stripping off just as much of her clothing as the law allows and defying, even inviting, Old Sol to do his utmost. If porch and garden furniture could emulate her example the homemaker would not be obliged every spring to answer that old question: What dresses can I put on the chairs, cushions and swinging seats that will not run when summer showers over take them or fade to an ugly drab under the ardent sunlight of August?

The answer to this question varies with the purse of the buyer and the amount of exposure to which the furniture is likely to be subjected. For the inclosed porch—subject to dampness but not direct rain—linen, cretonne, glazed chintz, monks cloth and the now popular percale are appropriate. Percale and cretonne are of course the most reasonable in this list. In cretonne there is the usual range of prices and designs, but the most interesting innovations are being made with linens, chintzes and percales. This last mentioned fabric is blossoming out in handblocked copies of old patterns and selling as high as \$2.97 a yard (50 inches wide).

The new patterns have clear colors with bright and often daring combinations, and many of them are as pictorial as old wall papers. England, for instance, has sent us a toile design, in black, like a pen and ink drawing, and a "white background" which shows scenes from the English Derby Day. Jockers, millies, bookies, picnickers eating and drinking, pickpockets plying their trade, all are depicted here with grotesque humor. The toile is 50 inches wide and sells for \$1.95 a yard.

Our own Tony Sarg, beloved of children, has designed a linen (34 inches, \$3.25) which he calls "Once Upon a Time"; over its surface loiter Goose characters cluster in a profusion.

"Provencal" (50 inches, \$8.25), linen designed by Helen Dryden, features well bred country diversions, with gayly dressed figures skating and riding on property horses. The colors are green-blue with peach, and a tete de negresse mauve with a dark, yellowish-green and blue-green, and electric blue with cherry red and magenta. "Guitar" (50 inches, \$8.65), another linen design by Miss Dryden, reveals a man and woman reclining under a broad-leaved tree, the cavalier playing inaudible harmonies to his lady love.

In his "Persian Garden," C. E. Falls has produced an Oriental pattern, using domes, mosques, vaulted arches, square towers and tall, straight trees, with a number of color combinations featuring rust, henna, blue and orange. "Dynamo" (50 inches, \$9.75), also by Mr. Falls, is a design inspired by the machine, with its movement and restless energy.

Much of the charming unreality of "The Bridge of San Luis Rey" has been caught by Rockwell Kent in the glazed chintz and cretonne made from the pattern which he originally designed for the cretonne covers of a limited edition of this popular book. The cretonne is only 85 cents a yard (thirty-four inches), but the glazed chintz is \$1.25 (thirty-four inches) and comes with a number of different backgrounds—coral, tan, black, gray, green and gold.

In addition to these and other pictorial designs there are many others with conventionalized flower motifs and modernistic combinations of circles, triangles and squares. A piece of monks cloth particularly festive for porch upholstery because of its bright, splashy colors, has thread of orange, green, black, blue and linen color loosely woven in a large checkerboard design (fifty inches, \$2.25).

In passing it should be added that if chintz is used for the porch, it is desirable to use the full-glazed, as this is a bit more water resisting than the lighter weights.

The above mentioned fabrics are all appropriate and practical for protected porches. When the furniture is either partially or entirely exposed to sun and weather, the problem of upholstery becomes much more complicated. Manufacturers, however, have met the challenge, and each year sees some new form of waterproof or semi-waterproof fabric put on the market. The most water-resisting are still canvas and oilcloth. Though canvas, striped, or stenciled in oil paints, is used for swing seats, hammock, umbrellas and motor-boat upholstery, it is a bit heavy and unwieldy for porch cushions. Oilcloth, however, has blossomed out into a bewildering variety of designs. In addition to the old-fashioned slick-surface kind in bright colors, oilcloth may now be bought under its own or several trade names, to imitate leather, silk, moire, chintz and linen, not only in the surface quality, but in the design. The bright colors are very effective in covering porch cushions and making removable back and seat covers for piazza furniture which is not upholstered. In covering cushions, it may be combined with other water-proof fabrics to form modernistic designs.

Oilcloth, however, since it is a heavily coated material, has the disadvantage of being difficult to sew, and the coating sometimes cracks off along the seams and folds. It is to do away with these faults that fabric designers have been struggling, and the result is a number of materials which vary greatly in pliability and price. These come in solid colors, in pressed designs, in narrow stripes—in-

cluding silver and gold—and printed in bright-hued designs. A very pretty group, called waterproof moire, comes in rich solid colors and looks much like the silk of that name. These fabrics range in price from 79 cents a yd. to \$3.25 a yard and in width are usually 34, 36 or 50 inches. The most attractive materials in this group are \$1.25 and \$1.95.

A new waterproofed fabric is being featured this year by many of the stores which is unusually pretty. It comes in four or more weights, the lightest being thin enough for lamp shades and shower curtains. Since there is no rubber in it, it is as pliable as glazed chintz and has a beautiful, lustrous, silk-like finish. Solid colors are clear and fresh in this material; some of the stores also carry it in printed. Viennese designs on colored backgrounds. The plain is 36 inches wide and costs 79 to 95 cents. A few of the stores are showing interesting, splashy designs in stenciled duck, which is reasonably water-resisting. This may be bought with backgrounds of gray, green, blue, white or black, and is 36 inches wide, \$1.75 a yard.

Some Bindings Run
In upholstering cushions with these various fabrics, neat and striking effect may be gained by weaving and binding the seams with black or with some contrasting color. Glazed chintz wetting and seam binding may be bought ready made in almost any color, but if black is used, it is well to remember that there is a danger that if it becomes damp it may run and come off on light summer clothes, since none of the various seam bindings are guaranteed not to run when they are in dark colors.

CURTAIN PINS

Pinche clothespins, or those called "patent clothespins" are excellent savers for window curtains when kept attached to drapes and used to pin back glass curtains each night.

ELECTRIC FANS

When washing out the refrigerator, try using the electric fan to dry it. It ventilates as well. Electric fans are good too to dry out laundry you want in a hurry.

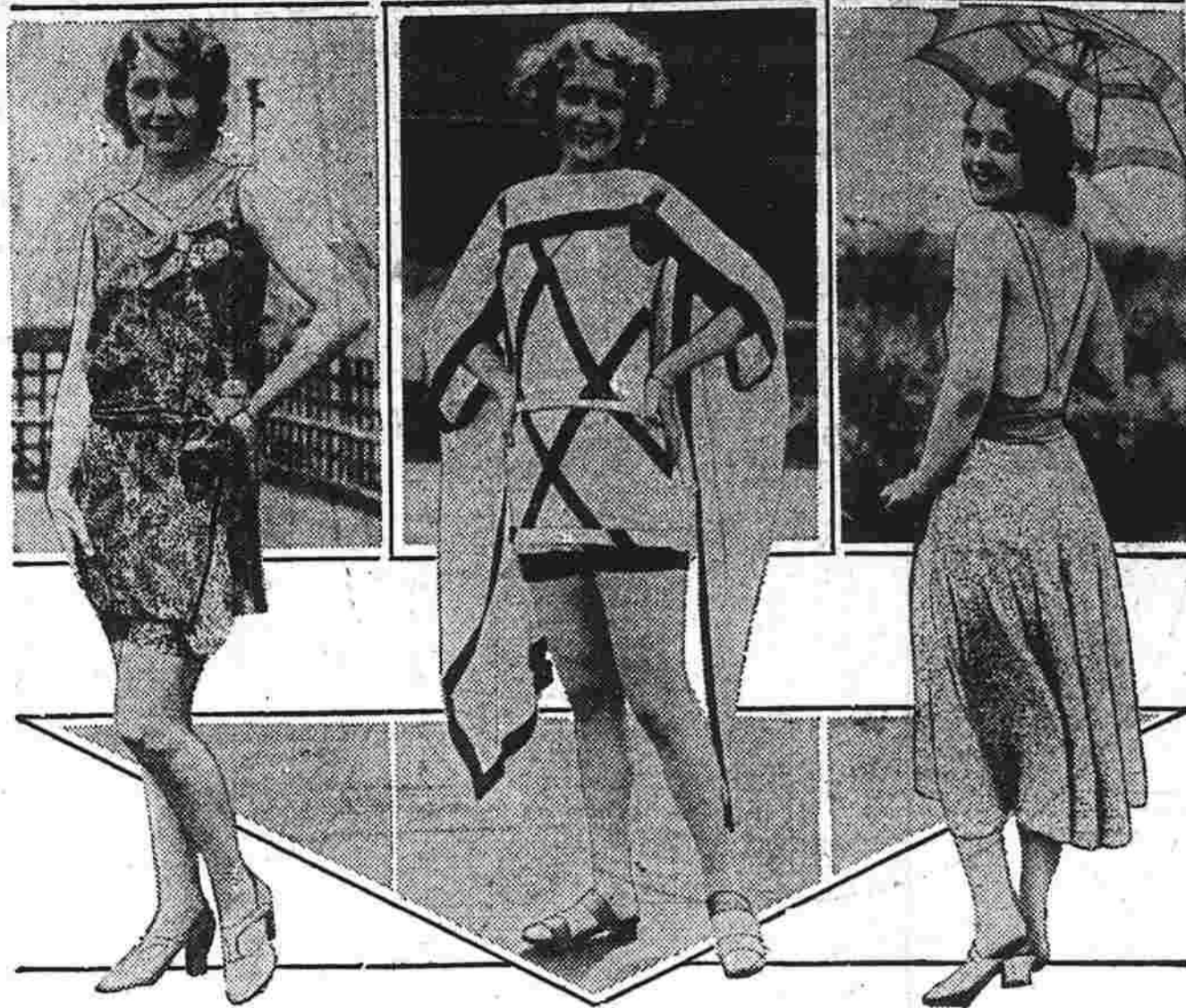
This little brown leafy figured silk suit has enviable chic. It features a skirt with godets, a waist-line sash and a little beige yoke ending in double bows. Vionnet sends a striking white ensemble with scarlet lattice work on the swimming suit and edging the very unusual cape which slips the head as well as the arms through slits. An imported suit slips a quilted yellow flowered calico skirt over a suntan back yellow bathing suit and completes the beach ensemble with matching call-

co mules and parasol, trimmed with green taffeta.

GLOVE VARE

With the advent of longer gloves with new frocks, glove care assumes importance. Never roll used gloves into a ball. Smooth out fingers, and blow air into them and fold carefully. Do not pull gloves off or on by the cuffs. Never put them away damp from rain or perspiration. When washing them, use soap flakes and add a little glycerine.

WOMEN WHO GO GOWNED TO THE SEA



COLORED SHOES
Colored shoes for summer are so universal now as to be novelties no longer.

Many staple oxfords, sandals and pumps are made in navy blue, green, purple and soft reds.

Evening slippers of white are dyed to match every color in the world.

Manchester Community Days

We are offering some very special values in

Jewelry and Stationery

For These Days

Visit our store early to get the best offerings.

THE DEWEY-RICHMAN CO.

Jewelers Silversmiths Stationers Opticians
767 Main Street

DO YOUR SHOE SHOPPING

AT

DIAMOND SHOE STORES

and Self Serve Bargain Basement

1013 MAIN STREET

SOUTH MANCHESTER

The Store That Has The Shoe Values!

Here Are Some of the Outstanding Values That Have Made Us Famous Throughout the State.

Where Else?
BOYS' AND YOUTHS' Sneaks 69c Pair

Where Else?
Heavy Suction Sole Firestone Sneakers For Men and Boys \$1.00 Pair
And They Are Strong

Where Else?
Men's Solid Leather Shoes & Oxfords Sports, Blacks and Browns \$2.88 Pair

Where Else?
Boys' All Leather Oxfords & Shoes \$2.88 Pair
Built to Wear for Boys That Tear

House Slippers All Colors for Women 49c Pair

Sneakers For Women and Girls 89c Pair

More Full Fashioned Hose All Leading Shades \$1.00 Pair

Misses' and Children's Play Oxfords 88c Pair

The Season for White Shoes Is On! So Is Our Stock Complete as Never Before \$1.95 and \$2.88 Pair

More Misses' and Children's One Straps \$1.95 Pair

More Work Shoes Leather or Uskide Soles \$2.66 Pair

More Scout Shoes \$1.66 Pair

More Women's Novelties \$1.95 Pair
Bargain Basement

More Summer Novelties For Women. Newest of the New. \$2.95 Pair

DIAMOND SHOE STORES

and Self Serve Bargain Basement

1013 MAIN STREET

SOUTH MANCHESTER CONN.

KEMP'S

Music Specials

Complete THE BEAUTY OF YOUR home



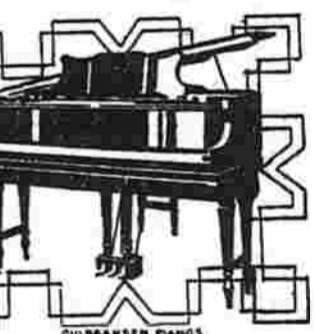
ATWATER-KENT Screen Grid Radio!

"The Finest in Radio"

Power, volume and fine tone make this new Atwater Kent Screen-Grid, the best value on the radio market.

Table Model Complete \$146.50

Many Cabinet Models to choose from "Convenient Terms"



A smart Gulbransen Grand will reflect everlastingly your good taste and culture. Other standard, period and art creations in a variety of finishes. See today, the world's only complete piano line manufactured under one name—and offered during A. G. Gulbransen's Golden Jubilee after 50 years of service to music!

\$495

Bench, Tuning, Delivery FREE

EASY TERMS

Get Your Kodak Out

Vacation or Trip

Always take a Kodak or Brownie along. Pictures are lasting reminders of "good times." New styles and low prices make it convenient to own a Kodak.

KODAKS \$5 up BROWNIES \$2 up

Films—Quality Developing and Printing



VISIT OUR STORE DURING THESE SPECIAL MERCHANT DAYS

KEMP'S

763 MAIN STREET

Her Fame World-Wide She Faces Prison Term



ELIZABETH MURRAY



Organized Mexican National Council for Women - Visited King Tut's Tomb - In Florida she conceived the idea of an arts colony

Dallas, Texas, June 12 — A short time ago she was one of the most prominent women in the country. She had traveled around the world, had been the guest of kings and prime ministers in Europe and Asia, had been a valued contributor to magazines and newspapers, had spoken to thousands of people from the lecture platform, had helped weld the friendship of the world into the compact organization.

Today, broken and lonely, she sits in a cell in the county jail here, awaiting transportation to the federal women's reformatory at Alderson, W. Va., to serve a 15-month sentence for using the mails to defraud.

That is the amazing story of Elizabeth Murray, who has tasted fame and power and who is now lonely, dejected and ready to give up.

"I'm through," she said dejectedly when an interviewer talked with her in the jail here.

Forgotten by friends, everything she had done in a lifetime has been wiped out in a moment. A month ago I had thousands of friends all over the world. Where are they today? None of them came to my aid in this trouble. I couldn't ask them to, anyway."

Few women have undergone so sudden and complete a change in fortune.

Elizabeth Murray has lived a life of intense and varied activity for years.

Writer and student since her youth, it was in 1920 that she conceived the idea of writing a new kind of world history—a history of the part played in the development of civilization by women. It was her belief that this, once understood properly, would cause a rewriting of all the history textbooks in the world for she held that the advancement of the race always has been and always will be in the hands of the women.

Toured the World So she started out, in 1920, to tour the world, make her researches, and organize the women of every country into one great federation that could influence the future conduct of events.

She had little money, but she was confident she could support herself with her pen. She did so. News-papers and magazines took her articles eagerly. Her mission aroused great interest, her lectures drew crowds.

First she went to Mexico and Central America. Then, after organizing the Mexican National Council of Women, she crossed the ocean to Spain, studying there the relics of forgotten civilizations to trace the part played in them by women. She was entertained by King Alfonso, and given government assistance in her organization work.

From Spain she went to London, where she remained for newspaper articles, helped Lady Aberdeen and other feminists organize an international women's peace conference. Then she went to Italy, had an audience with Mussolini, won his support for her plan and got government assistance in her researches in Italian libraries and ruins.

Visited King Tut's Tomb From Italy she went to Egypt, to be entertained by Premier Zagloul Pasha, who had her given permission to enter King Tut's tomb and other antiquities. From Egypt she continued to India, going thence to the Philippines to organize another women's federation. Thence she went to China and Japan, being entertained in the former country by the late President Sun Yat Sen.

When she returned to this country she had whole trunks full of material for her history,



Senator's Son to Become Diplomat

STRAW HATS NOW FOR EACH OCCASION

Business, Sport, Evening and Collegiate Types in the Newest Models.

By CURTIS WOOD

New York, June 12 — Warm weather has at last succeeded in getting out the straw vote for summer headgear.

There is no mistaking this year's straws. They are high-hat, in the first place, with the most conservative type boasting a crown at least a half inch taller than last year's. Second, they save a little on brims this season, most of them featuring narrow brims. Third, handbags are quite conservative if one remembers the jazzy bandings many a staid townsman wore last year. Fourth, some go pastel in tone, and a man can match his suntan complexion perfectly or he can pick one of the novel grayish, greenish, or apricot colored straws, for contrast.

Consciously Classy Hats Aside from these outstanding style points, new straw lids are really class conscious this year. There's a style for street or business and it's a social error to wear it on the links. Likewise a sports hat is quite out of place with a dinner suit. The answer to all this is that every man should have three new straws to start the style race right.

"Boaters," or yacht sailors, are the hats the majority of men buy first because they are the old standbys for street and business. This year it's correct to wear a dark hatband, brown, blue or black. Even clubs stripes or collegiate stripes restrain themselves to dark background and pin stripes of color.

The yacht sailor looks good with any kind of business suit, brown, grey, blue or light colored. A man can match his suit with his hatband. Young fellows will probably stick to striped bands but older men show a preference for plain ones. Practically every manufacturer has a slight different kind of weave for these straws, so there is variety.

Hats Put in the Shade For sportswear there are many straws, decorating the market, Panamas, Milans, leghorns and a variety of novelty straws are seen. These are the hats that take to pastel shades this season and it Persian Gardens, Fla. She had architects draw plans of great buildings in Persian architecture, where ambitious writers, poets, musicians and artists could live and accomplish their life ambitions.

To establish this colony, funds were necessary. Mrs. Murray set out to collect them. Something—she says she doesn't know just what—went wrong. A woman contributor in Texas complained to a government inspector that Mrs. Murray's methods were not legal. An investigation was followed by her arrest and indictment.

Given 15 Months "When they took me to court I was sick," she said. "I am a physician and I did not ask aid from any of my friends. The federal officers couldn't vision what I was trying to do. I was too dazed and heart-broken to tell them. My lawyer told me to plead guilty and I did. The next thing I knew they had sentenced me to 15 months in prison."

Mrs. Murray fainted when sentenced. After she had recovered the judge said to her:

"You are a sick woman, Mrs. Murray. You have had a brilliant career and done many good deeds. I hope you will consider this more of a hospital sentence than a penal one."

Name in "Who's Who" "Who's Who" gives Mrs. Murray's career plenty of space. She was born in Des Moines, Ia., was educated in Leland Stanford and Northwestern Universities, did post-graduate work in London University, and became known as a poet and public speaker before the war.

"I guess I'm through forever," she said, sadly. "I don't think I'll ever write again. Something inside me has died. If I ever do write it will be under a new name, Elizabeth Murray's career is ended."

Senator's Son to Become Diplomat

A chip off the old political block is Hiram Bingham, above, son of Senator Bingham of this state who soon will enter governmental activities in a diplomatic way. He has been appointed a vice consul by the state department and is being trained for foreign service.

Full line of Seth Thomas Clocks and Westclock Alarm Clocks in colors.

R. DONNELLY

JEWELER

515 Main St., South Manchester

It's Not the Front You Put Up, My Dears, It's the Back!



It's passe for the summer girl to try to put up a good front any more, because the back means everything, according to the newest edicts of Dame Fashion. At the left, above, is Evelyn Olson of Chicago, pictured with the beach pajamas to be worn with the new look bathing suits. In the center Virginia Kirkwood of Chicago evening dress in the new mode. To the right is Florence Lawrence of Chicago in a dress that is more dressy in the back than in the front. Dear me! It looks as if Florence had it on backwards!

roll up all around and still look first because they are the old standbys for street and business. This year it's correct to wear a dark hatband, brown, blue or black. Even clubs stripes or collegiate stripes restrain themselves to dark background and pin stripes of color.

For evening, when a man puts on a dinner jacket, the China split is the authentic headpiece. It has a black band and gives a man a more formal look than other straws.

There is more to this having several hats a season than the mere buying of them. The value of having three hats on the closet shelf allows a fellow to have them cleaned in turn, gives him the feeling of being several kinds of person, and sets him up in his own estimation, which is no mean feat. Aside from all this, of course, a

man can make a much better appearance from day to day if he is amply provided with neat looking headgear.

COTTON POPULAR Many summer frocks are of cotton fabrics this summer. Among the popular weaves are pique, gabardine, madras, sudanette and colored calico.

MEAT JELLIES The mother of a sick child tried

to give beef and chicken juice to her. When she refused to take them, repeatedly, the mother chilled the juices and served them as jelly on top of toast to the immense satisfaction of both the patient and the nurse.

REMOVABLE BANDS New panama and other white summer hats have Roman striped bandings that snap shut around the crown. Several can be made for each hat, matching the costume with which it is worn.

MEN!!

Shop At

SYMINGTON'S

During

Community Days

And find out about the quality of our merchandise and the service we offer.



STRAW HATS

Including Mallory Straws.

Panamas . . . \$6 and \$7

Sailors . . . \$2.50 up

Milans . . . \$3 to \$5

UNDERWEAR

Varsity Wilson Bros. Musingwear

\$1.00, \$1.50 and \$2.00

Fancy Shorts 75c and \$1.00 each

Knickers \$3.00 to \$6.50

Golf Hose \$1.00 to \$4.00 Pair

SYMINGTON SHOP AT THE CENTER

EXRU BATISTE Exquisite, hand-made sleeveless blouses come now in ecru batistes, featuring elaborate and intricately cut collars and jabot fronts. If one is clever with her needle, these should be a pleasure to make.

Exceptional HAT Offerings for Community Days. Full Fashion Double-Pointed Heel Chiffon Hose Regular \$2.25 \$1.49. COUPON OFFER We Will Give an Additional 10% REDUCTION Values to \$5.79. NELLEGS Manchester's Millinery Headquarters State Theater Building

To Introduce Our Children's Footwear Department DURING COMMUNITY DAYS JUNE 13, 14, 15. W. H. GARDNER 847 Main Street, Park Building, South Manchester

The Smart Shop "Always Something New" State Theater Building, South Manchester. PRINTED FROCKS For Community Days—June 13-14-15 In Georgettes, Flannels and Washable Silks \$4.95 to \$9.95. A Special Group at \$3.95. WASHABLE PORCH DRESSES Various materials, plenty of large sizes \$1. SWEATERS \$1.95. COOLIE COATS \$1.95. SMOCKS \$1.00. SLIPS Rayon . . . 95c Crepe de Chine . . . \$1.95. EDWARD HESS 855 Main St., Park Building, South Manchester ELECTRICAL FIXTURES "Make South Manchester Your Shopping Center"

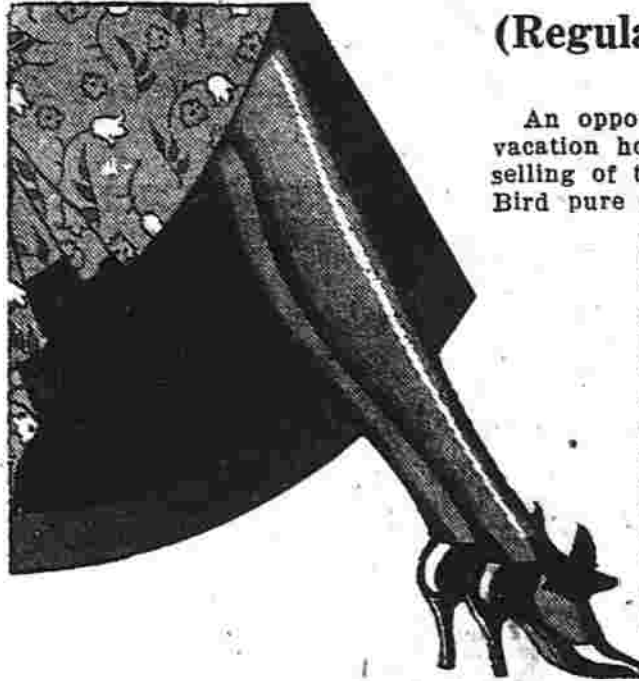
Shop At Manchester's Leading Department Store During SOUTH MANCHESTER'S COMMUNITY DAYS

Humming Bird
Pure Silk, Full Fashioned

SERVICE-SHEER HOSE

2 pairs \$1.95

(Regular \$1.65 Grade)



An opportune time to purchase vacation hose during this special selling of the famous Humming Bird pure silk hose. Service-sheer stockings with pointed heels that are smart looking and will give miles of wear. Unusually long stockings with extra top and side guards and run-stopping hems. Runs-of-the-mill but guaranteed to give the maximum of wear. A choice of smart shades — porcelain, white, mistery, naturale, light beige and flesh.

Hosiery—Main Floor

Thursday, Friday and Saturday, June 13, 14, 15

Silk Dresses

For Every Summer Occasion

\$14.75



A splendid showing of smart summer frocks that are suitable for town and resort wear . . . fluffy printed georgettes . . . sleeveless wash silks, many have "sun backs" . . . tailored printed silk crepes . . . rajah sports frocks . . . long sleeved silk crepes . . . these are but a few of the many styles to be found in this wonderful assortment. Frocks for miss and madam in white and pastel colors.

Women's \$49.50 & \$59.50 Coats

A group of stunning broadcloth dress coats in the smartest and most popular models to close-out at this low price. Individual models, plain or trimmed with mole, squirrel, broadtail, fitch and mink paw. Coats to wear now and later on chilly summer evenings at home or at the beach. Black, middy blue and tan.

\$29.75

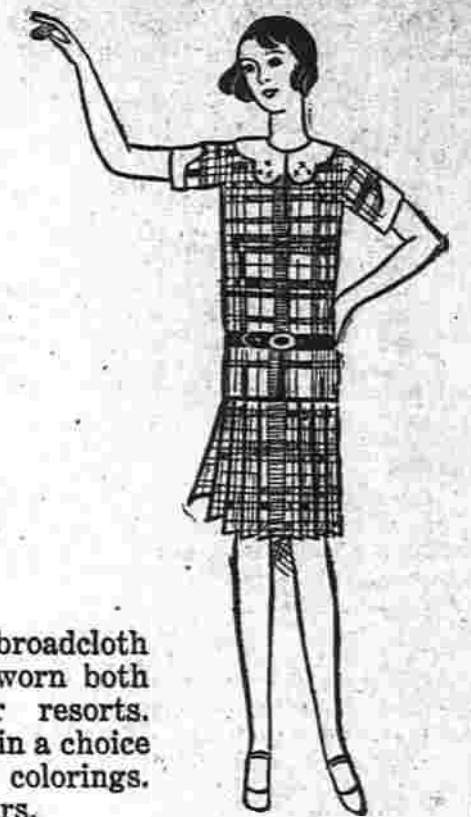
Hale's Apparel Dept.—Main Floor, Rear

Lucette Wash Frocks

for girls 7 to 14

\$1.98

(Regular \$2.98 Grades)



Well tailored printed dimity, broadcloth and voile dresses that can be worn both in town and at the summer resorts. Sleeveless or half-sleeve models in a choice of smart little prints in pastel colorings. Color fast patterns. 7 to 14 years.

One Group Girls' Coats

A small group of girls' spring coats to close-out at this price. Tweeds, kasha and sports mixtures, fur trimmed or plain, in mostly tan colorings. Coats that have been priced \$9.95 to \$16.50. 7 to 14 years.

\$5.00

Girls' Shop—Main Floor, rear

DOMESTICS

81x99 Seamless

Quality Bed Sheets \$1.39

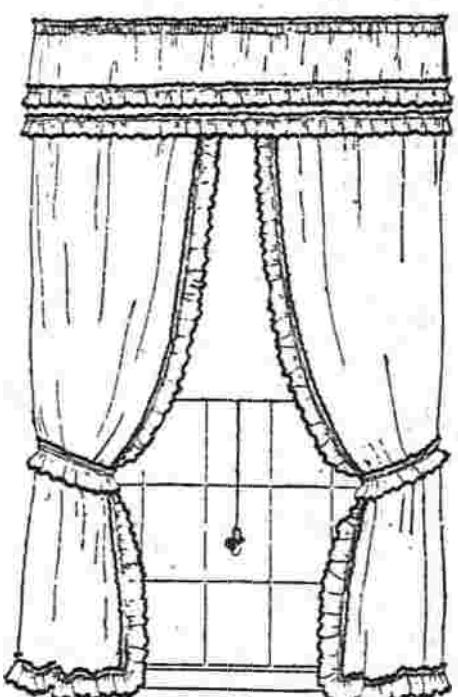
Fine quality, seamless bed sheets in the full, bed size, 81x99 inches. Sheets that will give from 3 to 5 years of satisfactory service. Suitable for home and at the summer cottage.

Empire Pillow Cases each 29c
Two popular sizes, 43x36 and 45x36 inches.

Ruffled Curtain Sets

with colored shell-stitched edges

\$1.49



(Sketched.) These ruffled curtain sets have been one of our most popular sellers. Fashioned from sheer cream voile finished with fast color shell-stitched edges in blue, gold, rose, Nile and lavender. The set consists of a pair of ruffled curtains, a valance and tie backs.

79c West Point Large

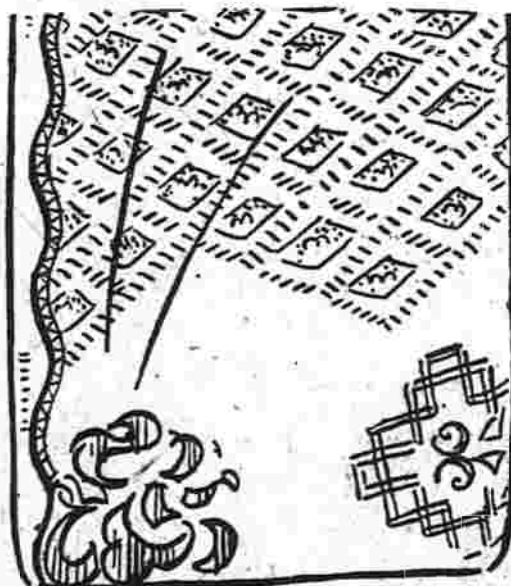
Turkish Towels, ea. 59c

With the summer season before you, you will want dozens of these large, absorbent Turkish towels on hand. The famous West Point quality, double thread towels with attractive colored borders of rose, blue, gold, green and lavender. Large towels, 24x48 inches. Subject to slight misweaves.

The Popular Criss Cross Rayon Bed Spreads

Now! \$3.98

An attractive jacquard rayon bed spreads in the new Criss Cross pattern. Large spreads, 88x108 inches. Scalloped edges. Solid colors of blue, gold, rose, green and lavender. Extra wide spreads. Special for Community Days only—\$3.98.



Pure Linen Lunch Cloths

Cheery colored luncheon cloths that will give color to your luncheon or breakfast table. Pure linen cloths with 1 or 2-tone colored borders in rose, blue, gold and green. 50 inches square. Hemstitched hems.

95c

Domestics—Main Floor, left

Women's Sleeveless Summer Frocks For Active Sports and Vacation Wear.

\$5.98



Cool little sleeveless dresses that are smart on the golf links . . . on the tennis court . . . at the beach. At this popular price we are showing linens, pastel colored silk crepes, scarf dresses, printed piques and plain piques in plain models with two or three pleats in the skirts. White and pastel shades.

Wash Dresses—Main Floor

National Cinderella Week, June 14 to 21

Cinderella Panty Dresses Printed Dimity, Voile and Cotton

95c

The nationally known Cinderella Kiddy Kloes—known for their durability and smartness. Choice of dimity, voile and cotton prints trimmed with touches of embroidery. Mothers will buy from four to six during this selling and save on sister's summer dress budget. Sizes, 2 to 6 years. Tub-fast colors.

Baby Shop—Main Floor, rear



All Silk Crepe de Chine

Costume Slips \$2.59

Heavy, pure silk crepe de chine costume slips with 9-inch shadow-proof hems; hemstitched tailored tops; side pleats. White and flesh. Sizes 36 to 44. Just the right weight to wear 'neath lightweight summer frocks.

Silk Slips—Main Floor, rear



Delustered

Rayon Underwear

88c each

These new rayon undies are popular for vacation wear as they are easily laundered and take up little room in vacation bags. Delustered rayon vests with plecto straps and tops; shields under-the-arms. The bloomers are well made and reinforced. Pink, peach, Nile, orchid, rosebud and white.

Rayon Underwear—Main Floor, right



Summer Felts In Pastel Shades

\$1.95

A special purchase of new summer felts in large brimmed . . . fisherman's . . . and cloche styles. All the popular pastel shades. Now you can afford to have a hat for each frock when they are priced but—\$1.95.

Main Floor

Drug Specials

Pompian Lip Stick Free with Pompian Face Powder, each 39c

Squibb's Mineral Oil 69c
Houbigant's Quelque, Fleur
Talcum 59c
Gillette Razor Blades 31c
1 tube Squibb's Tooth Paste and a tooth brush and holder 49c

Main Floor

Thousands of Yards of

Printed Wash Fabrics 39c yard

Cool, sheer wash fabrics that will fashion into smart sleeveless dresses for town and resort wear, boy's suits, house frocks, draperies, beach coats and pajamas, and snappy brief sets. The assortment includes: PRINTED DIMITIES, PRINTED LAVENS, PRINTED VOILES, PIQUE PRINTS, "YEAR ROUND" PRINTS, "YEAR ROUND" CHARMEUSETTE, DRENDA PRINTS, PRINTED SUITINGS

Main Floor

HOUSEWARES

Colored Handled

Quality Aluminumware, ea. \$1

Heavy, good quality paneled aluminum with the popular colored handles—green and red. June brides and women who have been keeping house from 1 to 10 years can use several of these pieces; 6-quart convex kettles, sauce pans, double boilers, 10-quart water pails, tea kettles and 10-quart rolled rim dish pans.



21-Piece Imported Japanese Bridge Sets Special \$2.98 Set

(As sketched.) Beautiful imported Japanese luster tea sets in choice of two scenic designs. We suggest these sets especially for an inexpensive wedding gift, shower gift, or for summer entertaining. The set consists of a creamer, a sugar bowl, a tea pot and 6 cups and serving plates.

36 Only—Unpainted and Mahogany Finished

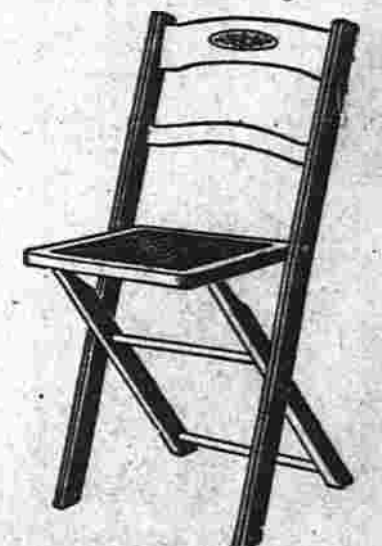
Windsor Chairs \$1.49

No doubt, you can use several of these chairs both at home and at the summer cottage . . . on the veranda, in the living-room, dining-room, and bedrooms. Choice of unpainted or mahogany finished chairs; all birch, well-constructed. Chairs that ordinarily retail for a much higher price.



Porcelain Kitchen Clocks \$2.49

(Sketched.) Attractive porcelain kitchen clocks with fruit decorations. Eight-day, American movement, guaranteed clocks. Also a few blue and white dutch mill clocks.



Colored Folding Chairs \$1.00

(Sketched.) Choice of red and green finished folding chairs with padded black seats. Chairs that can be used for bridge and on the porch. Easily folded and put aside when not in use.

Cool Green Glassware

Goblets and tall sherberts in the wide optic pattern. Cool, green color only. Just the glasses for summer entertaining! ea. 10c

Housewares—Basement

The J.W. Hale Company
SOUTH MANCHESTER, CONN.